

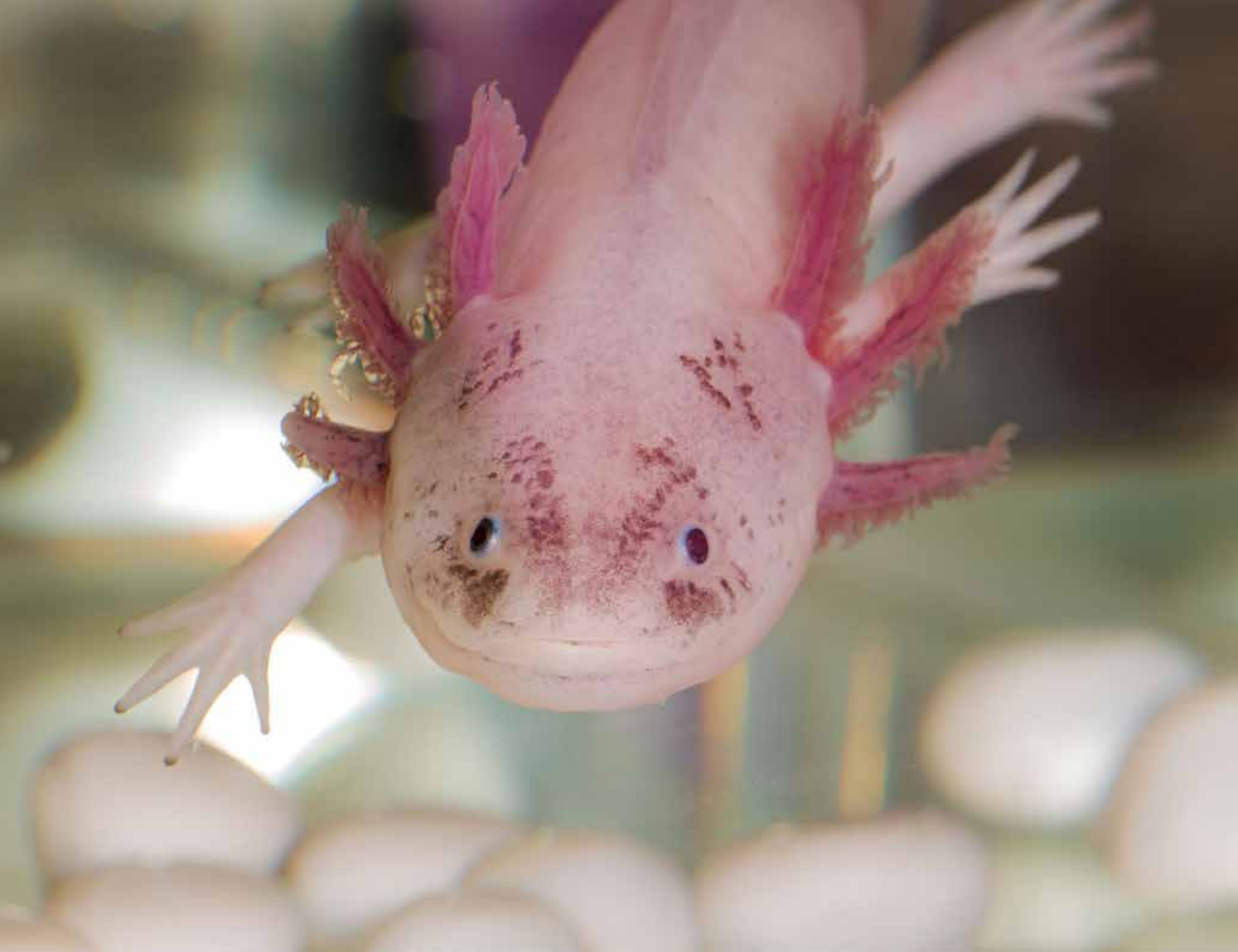


axolotte

# Products Catalog

2024-2025







axolotte

---

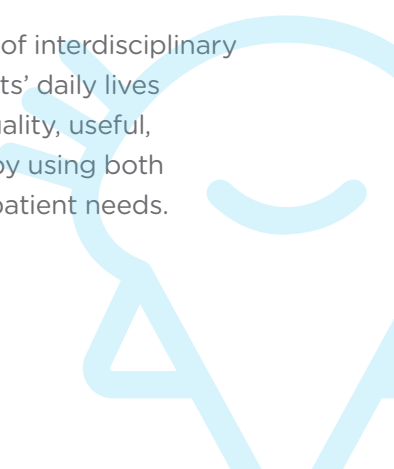
Axolotte was founded in 2004 by faculty members Assoc. Prof. Dr. Altay Savalan and Spec. Dr. Elham Savalan. Initially operating in the field of biotechnology, the company has focused on professional work in the field of physical medicine and rehabilitation since 2015.

Axolotte continues its scientific projects on the development of medical and orthopedic products with the contribution of interdisciplinary expert researchers and consultants (clinical-engineering and health basic sciences). The company aims to eliminate the deficiencies identified in orthopedic products and to develop new, effective products specific to patients and diseases.

Various orthopedic products used in orthopedics and neurological diseases cannot provide solutions that are suitable for patient needs despite the rapid development of today's technology. In order to meet this need, Axolotte has set out to produce modern and patient-focused solutions through interdisciplinary studies.

As Axolotte, we believe in the power of interdisciplinary studies. Our goal is to support patients' daily lives by developing more suitable, high-quality, useful, comfortable and effective products by using both modern technology and prioritizing patient needs.

Your comfort is our passion!



The background is a solid purple color. It features a repeating pattern of small, stylized faces with closed eyes and a slight smile, each with a pointed chin and radiating lines above its head. On the right side, there is a large, faint profile of a human head facing right, with a hand raised near the ear.

# Cervical Collar

AX-0101

## Soft Cervical Collar

Adjusted to anatomical neck shape. Produced from 45 density hard sponge material. The fabric part is made of Bamboo, which is soft and has the feature of keeping the skin dry. Provided in two different heights (8 cm and 10 cm). Can be washed due to having the extra cover on it. Has an adjustable Velcro fastener on the back. Keeps the neck warm, soft neck collar that restricts neck movements and supports muscles.



	1	2	3
Size	S	M	L
cm	28-33	34-39	40-45

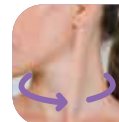




AX-0102

## Nelson Collar

Adjusted to anatomical neck shape. Made of 12mm anti-allergic plastazote material. Has holes that help skin to breathe. Restricts neck movements and supports muscles. Provides semi-rigid support.



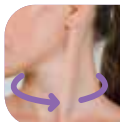
	1	2	3	4
Size	S	M	L	XL
cm	32-35	36-39	40-43	43-46



AX-0103

## Nelson Collar With Chin Support

Adjusted to anatomical neck shape. It has holes that help skin to breathe. It is made of 12mm anti-allergic plastazote material. Has special support for the jaw. Prevents flexion and keeps the neck in extension. Provides semi-rigid support.



	1	2	3	4
Size	S	M	L	XL
cm	32-35	36-39	40-43	43-46

/ Cervical Collar

axolotte.com.tr



AX-0104

## Height Adjustable Cervical Neck Collar

Designed according to Neck Ergonomics. Due to its breathable materials, it keeps your neck dry and odour-free. Due to its layer by layer and special Velcro design it offers adjustable height and circumference for neck. Restricts neck movements and supports neck muscles. Provides semi-rigid support.



	1	2	3	4	5
Size	S	M	L	XL	XXL
cm	28-33	34-39	40-45	43-46	47-50

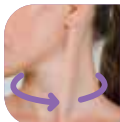




AX-0105

## Adjustable Height Cervical Collar With Chin Rest

Designed according to Neck Ergonomics. Due to its breathable materials, it keeps your neck dry and odour-free. Due to its layer by layer and special Velcro design it offers adjustable height and circumference for neck. Has special support for the jaw. Prevents flexion and keeps the neck in extension.



	1	2	3	4	5
Size	S	M	L	XL	XXL
cm	32-35	36-39	40-43	43-46	46-50

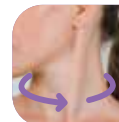




AX-0106

## Philadelphia Collar

Provides full stability during emergency transport of patients with neck fractures. Consists of occiput and mandibular parts. Properly limits neck movements.



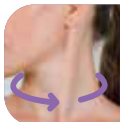
	1	2	3
Size	S	M	L
cm	33-37	38-42	43-47



AX-0107

# Philadelphia Tracheostomy Collar

Consists of occiput and mandibular parts. Properly limits neck movements. Suitable for tracheostomy.



	1	2	3
Size	S	M	L
cm	33-37	38-42	43-47

/ Cervical Collar

axolotte.com.tr



AX-0108

## Minerva Collar

A corset that extends to the lower costal margin. Provides good control of all cervical motion. Includes adjustable height. The dorsal part allows the patient to sleep on his/her back without being disturbed. Provides more movement restriction with respect to Philadelphia.



	1	2	3
Size	S	M	L
Neck	33-37	38-42	43-47
Shoulder	70-90	90-110	110-130

The background is a solid light blue color. It features a repeating pattern of small, stylized star-like icons with a smiling face and radiating lines. On the right side, there is a large, faint silhouette of a hand with fingers spread, positioned as if reaching towards the center.

---

# Waist & Back Corsets

AX-0201

# Woolen Corset

Made from elastic wool fabric. Provides warmth and compression to the abdomen and waist area. It provides warmth and compression by preserving body temperature in the applied organ.



	1	2	3	4	5
Size	S	M	L	XL	XXL
cm	75-85	85-95	95-105	105-115	115-135

/ Abdominal Corsets

axolotte.com.tr



AX-0202

## Wool Camel Hair Corset

Made from camel hair fabric. Provides warmth and compression to the abdomen and waist area. It provides warmth and compression by preserving body temperature in the applied organ.



- 1
- 2
- 3
- 4
- 5

Size	S	M	L	XL	XXL
cm	75-85	85-95	95-105	105-115	115-135



AX-0203

## Working Corset

It is 16 cm high. Made of fabric that is breathable and supports the waist and back area. There are 4 plastic supports in the back area. Stabilization is provided with two cross-band belts from the back area to the waist area.







AX-0204

## Pregnancy Corset

It is made from breathable cotton and soft fabric. It can be used before and after birth. It prevents waist and back pain by supporting the abdomen during pregnancy. It is also used as an abdominal tightener after birth. It is compatible with the growth of the abdomen with its adjustable straps.



	1	2	3	4	5
Size	S	M	L	XL	XXL
cm	75-85	85-95	95-105	105-115	115-135



AX-0205

## Lumbostad Corset with Steel Underwire (26 cm)

Made of flexible, breathable and anti-sweat fabric. The height is 26cm. Consists of two steel and four plastic underwire supports that stabilize the spine. The steel underwire is removable and attachable. Steel underwires can be bent manually according to lumbar lordosis feature. Reduces the load on the discs with its cross-elastic band belt. Elastic fabric provides compression to the waist area.



	1	2	3	4	5
Size	S	M	L	XL	XXL
cm	75-85	85-95	95-105	105-115	115-135





AX-0206

## Lumbostad Corset with Steel Underwire (26 cm) (Standard)

Made of flexible, breathable and anti-sweat fabric. The height is 26cm. Consists of two steel and four plastic underwire supports that stabilize the spine. The steel underwire is removable and attachable. Steel underwires can be bent manually according to lumbar lordosis feature. Reduces the load on the discs with its cross-elastic band belt. Elastic fabric provides compression to the waist area.



AX-0207

## Lumbostad Corset with Steel Underwire (32 cm)

Made from flexible, breathable, anti-sweat fabric and special elastic material. The 32cm height helps to support the lumbosacral region. Consists of two steel and four plastic underwire supports that stabilize the spine. The steel underwire is removable and removable. The steel underwires can be bent manually according to lumbar lordosis. Reduces the load on the discs with its cross-elastic band belt. Elastic fabric provides compression to the waist area.



	1	2	3	4	5
Size	S	M	L	XL	XXL
cm	75-85	85-95	95-105	105-115	115-135





AX-0208

## Lumbostad Corset with Steel Underwire (32 cm) (Standard)

Made from flexible, breathable, anti-sweat fabric and special elastic material. The 32cm height helps to support the lumbosacral region. Consists of two steel and four plastic underwire supports that stabilize the spine. The steel underwire is removable and removable. The steel underwires can be bent manually according to lumbar lordosis. Reduces the load on the discs with its cross-elastic band belt. Elastic fabric provides compression to the waist area.



AX-0209

## Dorso-Lumbar Corset

Made from lightweight, breathable, flexible, moisture-absorbing cotton blended elastic fabric. The structure of the fabric and the design of the corset ensure that the pressure is distributed evenly. The design of the support promotes proper posture by pulling the shoulders back and aligning the spine. Consists of two steel and four plastic underwire supports. Removable metal supports provide additional stable support. The soft pad at the waist keeps it tension-free as well as providing extra stability. Adjustable cross straps ensure individual fit and support.



	1	2	3	4	5
Size	S	M	L	XL	XXL
cm	75-85	85-95	95-105	105-115	115-135





AX-0210

## Dorso-Lumbar Corset (Standard)

Made from lightweight, breathable, flexible, moisture-absorbing cotton blended elastic fabric. The structure of the fabric and the design of the corset ensure that the pressure is distributed evenly. The design of the support promotes proper posture by pulling the shoulders back and aligning the spine. Consists of two steel and four plastic underwire supports. Removable metal supports provide additional stable support. The soft pad at the waist keeps it tension-free as well as providing extra stability. Adjustable cross straps ensure individual fit and support.



AX-0211

# Posturex Bandage

Made from breathable and sweatproof fabric. There are plastic underwires on both sides of the spine. Prevents hyperkyphotic dysphagia and its progression.



	1	2	3	4	5
Size	S	M	L	XL	XXL
cm	75-85	85-95	95-105	105-115	115-125

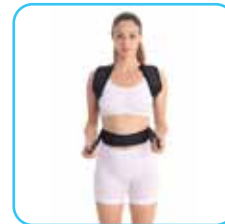




AX-0212

## Posturex Bandage (Standard)

Made from breathable and sweatproof fabric. There are plastic underwires on both sides of the spine. Prevents hyperkyphotic dysphagia and its progression.



AX-0213

## Postorex with Steel Underwire Corset (Standard)

Made from breathable and sweatproof fabric. There are steel underwires on both sides of the spine. Prevents hyperkyphotic dysphagia and its progression.





AX-0214

## Postorex Wide Underwire Corset (Standard)

Made from neoprene fabric. There are plastic underwires extending to the lumbar region on both sides of the spine. Belts at the waist position provide support for the lumbar cavity. It prevents hyperkyphotic posture disorder and has a stimulating effect.



AX-0215

## Postorex Long Underwire Corset (Standard)

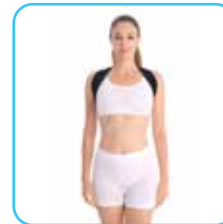
Made from neoprene fabric. There are plastic underwires extending to the lumbar region on both sides of the spine. Belts at the waist position provide support for the lumbar cavity. It prevents hyperkyphotic posture disorder and has a stimulating effect.



AX-0216

## Postorex Single Underwire (Standard)

Made from neoprene fabric. Has an underwire that will support the spine from the middle. Prevents Hyper Kyphotic posture disorder and provides a stimulating effect.



AX-0217

## Steel Supported Chest Corset

Has sternum support with steel splints and is made of high-quality elastic fabric. It is easy to put on and take off thanks to the practical Velcro system and adjustable shoulder straps. Supports the sternum and thoracic cranium and stabilizes the sternoclavicular joints and rib cage after open heart and thoracic surgeries. Provides protection against pain caused by sudden movements and gives the patient confidence and comfort. Helps recovery after surgery with its proprioceptive effect.



	1	2	3	4	5
Size	S	M	L	XL	XXL
cm	75-85	85-95	95-105	105-115	115-125

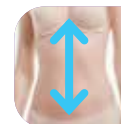




AX-0218

## Hyperextension Corset

Its outer surface is made of special aluminum material. The part in contact with the skin surface is covered with a terry pad. It is a body orthosis that stimulates hyperextension position by limiting the flexion of the trunk from 3 points. Length and width adjustments can be made on the orthosis thanks to the screw system on it. Provides anatomically correct posture by limiting spinal movements to a certain extent. Accelerates the healing process by increasing stability.



	1	2	3
Size	S	M	L
cm	40-46	47-53	54-60



AX-0219

# Elastic Abdominal Corset

Made from premium fabric that does not sweat and is breathable. Can be used easily without being visible under the clothes. Supports the belly and surgical area with its designed elastic texture.



	1	2	3	4	5
Size	S	M	L	XL	XXL
cm	75-85	85-95	95-105	105-115	115-135



AX-0220

## Elastic Abdominal Corset (Standard)

Made from premium fabric that does not sweat and is breathable. Can be used easily without being visible under the clothes. Supports the belly and surgical area with its designed elastic texture.



AX-0221

# Neoprene Abdominal Corset

Made from neoprene fabric. Supports the navel and surgical area. By helping to remove abdominal and belly fat, it provides slimming and tightening in the waist area of the users. With regular use and a healthy eating routine, it allows people to have the desired appearance and body lines.



	1	2	3	4	5
Size	S	M	L	XL	XXL
cm	75-85	85-95	95-105	105-115	115-135

/ Abdominal Corsets

axolotte.com.tr



AX-0222

## Postpartum Corset

Supports the postpartum belly with its designed elastic tissue. Prevents skin and organ sagging. Supports firming and supports upright posture, especially during breastfeeding.



	1	2	3	4	5
Size	S	M	L	XL	XXL
cm	75-85	85-95	95-105	105-115	115-135



AX-0223

# Umbilical Hernia Corset

Includes silicone pad covered with breathable cotton. With its designed elastic tissue, it supports the hernia area and prevents its growth.



/ Abdominal Corsets

oxolotte.com.tr



	1	2	3	4	5
Size	S	M	L	XL	XXL
cm	75-85	85-95	95-105	105-115	115-135





AX-0224

## Umbilical Hernia Corset (Standard)

Includes silicone pad covered with breathable cotton. With its designed elastic tissue, it supports the hernia area and prevents its growth.



AX-0225

## Colostomy Corset (16cm)

Reduces the risk of postoperative parastomal hernia. Supports stoma after surgery. Protect the colostomy bag. Made of premium fabric that does not sweat and is breathable. Can be used easily without being visible under clothing. With two removable plastic underwire supports on both sides of the stoma opening, it prevents unwanted movements of the stoma and possible leaks that may occur during daily sports activities.



	1	2	3	4	5
Size	S	M	L	XL	XXL
cm	75-85	85-95	95-105	105-115	115-135





AX-0226

## Colostomy Corset (26cm)

Reduces the risk of postoperative parastomal hernia. Supports stoma after surgery. Protect the colostomy bag. Made of premium fabric that does not sweat and is breathable. Can be used easily without being visible under clothing. With two removable plastic underwire supports on both sides of the stoma opening, it prevents unwanted movements of the stoma and possible leaks that may occur during daily sports activities.



1 2 3 4 5

Size

S

M

L

XL

XXL

cm

75-85

85-95

95-105

105-115

115-135

AX-0227

## Unilateral Inguinal Truss

In cases of inguinal hernia, it can be easily used under underwear. Its application before surgery prevents the growth of the hernia. Used to support the surgical area after surgery. Thanks to its special scrotal pad, when worn it does not disturb the body during use. Has arches that allow it to align and maintain its proper position.





AX-0228

## Bilateral Inguinal Truss

In cases of inguinal hernia, it can be easily used under underwear. Its application before surgery prevents the growth of the hernia. Used to support the surgical area after surgery. Thanks to its special scrotal pad, when worn it does not disturb the body during use. Has arches that allow it to align and maintain its proper position.



The background is a solid blue color. It features a repeating pattern of small, light blue smiley faces with closed eyes and a slight smile. On the right side, there is a large, semi-transparent, light blue graphic of a hand with fingers spread, appearing to be part of a larger figure or gesture.

---

# Shoulder Orthoses

AX-0301

# Shoulder Support

Made from neoprene material. Provides warmth and support to the elbow joint. With its pressure effect, provides an antalgic effect with its pressure effect.



- 1
- 2
- 3
- 4
- 5

Size	S	M	L	XL	XXL
cm	22-24	24-27	27-30	30-34	34-38

axolotte.com.tr / Shoulder Orthosis

axolotte.com.tr



AX-0302

## Shoulder Support (Standard)

“Made from 3mm neoprene material. Applies compression. Prevents edema and reduces pain by supporting the shoulder from the armpit area.



AX-0303

## Mesh Arm Sling

Made from breathable mesh fabric. Has wide, comfortable and adjustable straps. Is compatible with both right and left sides.



axolotte.com.tr / Shoulder Orthosis



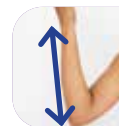
	1	2	3	4	5
Size	S	M	L	XL	XXL
cm	30-33	33-36	36-39	39-42	42-45



AX-0304

## Arm Sling (Lux)

Made from fabric that keeps warm. Has wide, comfortable and adjustable straps. Thanks to the waist belt support, there is no excessive load on the neck and other shoulder. Is compatible with both right and left sides.



	1	2	3	4	5
Size	S	M	L	XL	XXL
cm	30-33	33-36	36-39	39-42	42-45

AX-0305

## Sling with Abduction Pillow (30 Degree)

It is easy to use and practical thanks to its comfortable and adjustable straps. Designed with a pad to keep the shoulder at 30-45 degrees.





AX-0306

## Sling with Abduction Pillow (45 Degree)

It is easy to use and practical thanks to its comfortable and adjustable straps. Has a pad that keeps the shoulder at 45-60 degrees.





AX-0307

## Velpau Bandage

Designed to keep the arm and shoulder fixed in the desired position in cases of humerus fractures and shoulder dislocation. Has adjustable straps and is fixed with a chest strap. It is practical and designed to be easy to use.



	1	2	3	4	5
Size	S	M	L	XL	XXL
cm	30-33	33-36	36-39	39-42	42-45

/ Shoulder Orthosis

axolotte.com.tr



AX-0308

## Clavicle Bandage

Provides stabilization in clavicle and sternum-clavicle fractures. It has compression and pain relieving effects. Its 8-shape design and adjustable velcro straps make it easy to put on and take off.



1 2 3 4 5

Size	S	M	L	XL	XXL
cm	26-31	32-37	38-44	45-51	52-58

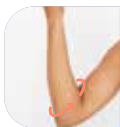
The background is a solid orange color. It features a repeating pattern of small, stylized, smiling faces with radiating lines above them, resembling a sun or a happy expression. On the right side, there is a large, faint silhouette of a hand with fingers spread, positioned as if reaching towards the center. A white horizontal line is drawn across the middle of the page, starting from the left edge and ending just before the text.

# Elbow Orthosis

AX-0401

# Elbow Support

Made from neoprene material. Provides warmth and support to the elbow joint. Provides an antalgic effect with its pressure effect.



	1	2	3	4	5
Size	S	M	L	XL	XXL
cm	22-24	24-26	26-28	28-30	30-32

AX-0402

## Elbow Support (Standard)

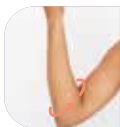
Made from neoprene material. Provides warmth and support to the elbow joint. Provides an antalgic effect with its pressure effect.



AX-0403

## Elbow Support With Pad

Made of 3 mm neoprene. With its soft pad, it provides high protection in cases such as olecranon bursitis and sulcus ulnar syndrome. Provides support and protection for athletes.



	1	2	3	4	5
Size	S	M	L	XL	XXL
cm	22-24	24-26	26-28	28-30	30-32

axolotte.com.tr / Elbow Orthosis

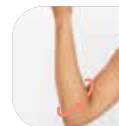
axolotte.com.tr



AX-0404

## Tennis Elbow Support

Made from neoprene fabric. Provides support to the elbow joint. With the adjustable band at the bottom, it creates a compression effect on the muscle group connected to the epicondyle and bypasses the epicondyle in the elbow joint.



	1	2	3	4	5
Size	S	M	L	XL	XXL
cm	22-24	24-26	26-28	28-30	30-32

AX-0405

## Epicondylitis Bandage

Bypasses the elbow and epicondyle by applying pressure to the tendons and reducing the load on epicondylitis. Can be adjusted according to the person with the band on it.







AX-0406

## Epicondylitis Bandage with Silicon Pad

Has a silicon pad that provides local compression and a gel pad that allows for cold therapy use. Bypasses the elbow and epicondyle by applying pressure to the tendons with its designed three-point pad and reduces the load on epicondylitis. Can be adjusted according to the person with the band on it.



AX-0407

## Epicondylitis Bandage with Gel Pad

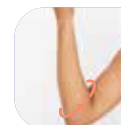
Has a gel pad that provides local compression and a gel pad that allows for cold therapy use. Bypasses the elbow and epicondyle by applying pressure to the tendons with its designed three-point pad and reduces the load on epicondylitis. Gel pad provides cold treatment. Can be adjusted according to the person with the band on it.



AX-0408

# Cubital Tunnel Elbow Support

Used in cubital tunnel syndrome and ulnar nerve damage. The 40-degree inclined steel support prevents bending of the elbow and stretching of the nerve, so that the nerve rests in its maximum comfortable position without being trapped.



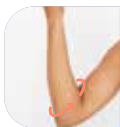
- 1
- 2
- 3
- 4
- 5

Size	S	M	L	XL	XXL
cm	22-24	24-26	26-28	28-30	30-32

AX-0409

## Elbow Immobilizer

Made from neoprene fabric. Prevents sweating thanks to the laminated towel on its inner surface. Keeps the elbow joint in extension with 3 steel supports.



	1	2	3	4	5
Size	S	M	L	XL	XXL
cm	22-24	24-26	26-28	28-30	30-32



# Hand and Wrist Orthoses

---



AX-0501

## Simple Wristband

Made from neoprene material. Provides better protection by wrapping the wrist in the form of a bandage. Helps rehabilitation by preserving heat in wrist injuries, sprains and traumas. Prevents injuries and dislocations that may occur during sports and physical activities.



AX-0502

# Wrist Rest Splint

Provides immobilization of the wrist in a neutral position. Used in wrist immobilization and carpal tunnel syndrome.



	1	2	3	4	5
Size	S	M	L	XL	XXL
cm	14-16	16-18	18-20	20-22	22-24



AX-0503

## Wrist Rest Splint(Standard)

Provides immobilization of the wrist in a neutral position. Used in wrist immobilization and carpal tunnel syndrome.





AX-0504

## Bidirectional Hand Wrist Rest Splint (Standard)

Provides immobilization of the wrist in a neutral position. Used for wrist immobilization and carpal tunnel syndrome. Can be used for both hands.

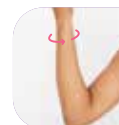




AX-0505

## Wrist Splint With Thumb Support

Ensures thumb immobilization and the wrist in a neutral position. Used to restrict thumb and wrist movement in de Quervain and carpal tunnel syndrome (stabilization of the thumb and wrist joint).



1 2 3 4 5

Size	S	M	L	XL	XXL
cm	14-16	16-18	18-20	20-22	22-24



AX-0506

## Wrist Rest Splint with Thumb Support (Standard)

Ensures thumb immobilization and the wrist in a neutral position. Used to restrict thumb and wrist movement in de Quervain and carpal tunnel syndrome (stabilization of the thumb and wrist joint).

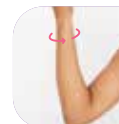




AX-0507

## Wrist Rest Splint with Thumb Support (Double Sided Mesh)

Used for thumb and wrist immobilization after plaster casts and surgery in cases of De Quervain and carpal tunnel disorders. Has bandage around the wrist that increases stabilization. Has two underwire channels in right and left. Metal underwire is placed in one of these channels according to the hand on which the product will be applied. Underwire always falls on the inner part of the hand on which the product is applied.



1 2 3 4 5

Size	S	M	L	XL	XXL
cm	14-16	16-18	18-20	20-22	22-24

AX-0508

## De Quervain Splint

There is an aluminum that keeps the thumb in a neutral position. The aluminum part is extended above the wrist. Used to treat De Quervain syndrome and restrict movement of the thumb and wrist. Provides stabilization of the thumb and wrist joint.



	1	2	3	4	5
Size	S	M	L	XL	XXL
cm	14-16	16-18	18-20	20-22	22-24





AX-0509

## De Quervain Splint (Standard)

There is an aluminum that keeps the thumb in a neutral position. The aluminum part is extended above the wrist. Used to treat De Quervain syndrome and restrict movement of the thumb and wrist. Provides stabilization of the thumb and wrist joint.



AX-0510

## Lace-Up Wrist Splint

Provides immobilization of the wrist in a neutral position. Used in wrist immobilization and carpal tunnel syndrome. Due to its designed laces, it is easy to put on and provide stabilization.





AX-0511

## Lace-Up Wrist Rest Splint with Thumb Support (Standard)

Provides thumb immobilization and keeps the wrist in a neutral position. Used to restrict thumb and wrist movement in de Quervain and carpal tunnel syndrome (stabilization of the thumb and wrist joint). It is easy to put on and provide stabilization with its designed laces.





AX-0512

## Boxer Fracture Splint (Standard)

Used for boxer fractures and contusions. Provides stabilization of the 4th and 5th fingers and wrist.

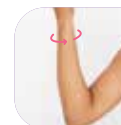




AX-0513

## Thermoplastic Hand Immobilisation Splint

Made from thermoplastic material and is lightweight. The interior is lined with soft quality fabric. Keeps the wrist at rest in a neutral position.



	1	2	3
Size	S	M	L
cm	14-17	18-21	22-25



AX-0514

# Thermoplastic Anti-spasticity Splint

Made from thermoplastic material. Has spaced finger channels. In spastic cases, it keeps the hand in a neutral position by preventing flexion of the hand and fingers.



	1	2	3
Size	S	M	L
cm	14-17	18-21	22-25

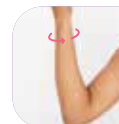




AX-0515

## Thermoplastic Dynamic Hand-Finger Splint

Made from thermoplastic material. Passively stabilizes the wrist and fingers in extension. Allows active finger flexion. Allows controlled movement in the early period to prevent the formation of adhesions after tendon repair in extensor tendon injuries.



	1	2	3
Size	S	M	L
cm	14-18	18-22	22-26



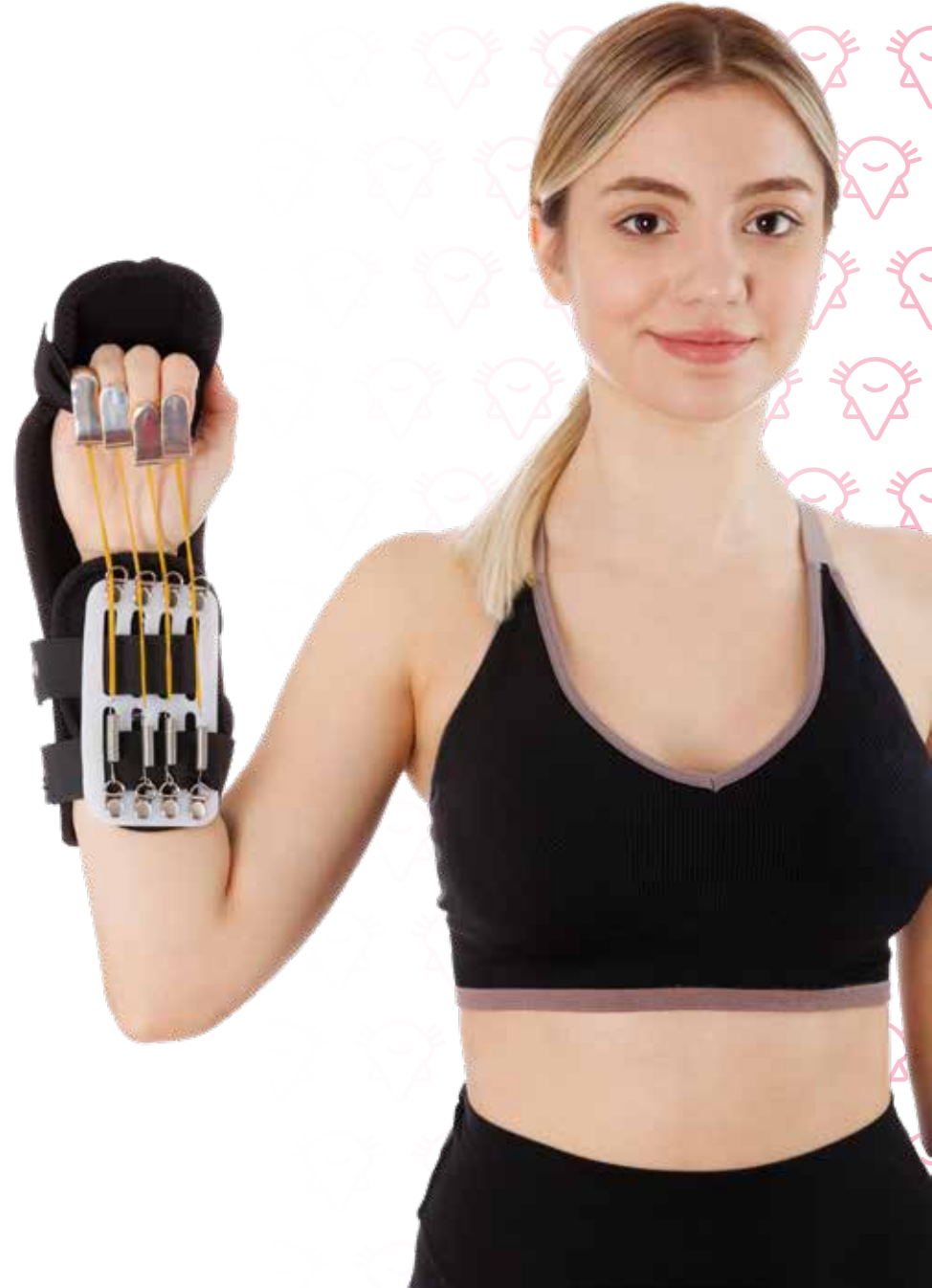
AX-0516

# Thermoplastic Kleinert Splint

Made from thermoplastic material. Passively stabilizes the wrist and fingers in flexion. Active finger allows extension. Allows controlled movement in the early period in order to prevent the formation of adhesions after tendon repair in flexor tendon injuries.



	1	2
Size	S	M
cm	14-18	18-22





# Finger Splints

---



AX-0601

## Middle Finger Fracture Splint (Standard)

Aluminum support provides immobilization of the finger in extension.



AX-0602

# Baseball Splint

The inside is covered with plastozote. Aluminum support provides immobilization of the finger in extension.



axolotte.com.tr / Finger Splints

axolotte.com.tr

	<b>1</b>	<b>2</b>	<b>3</b>
<b>Size</b>	<b>S</b>	<b>M</b>	<b>L</b>
cm	4.5-5	5-6	6-7





AX-0603

## Butonier Splint

It is a finger splint made of thermoplastic. Keeps the finger in extension at 3 points.



	1	2	3
Size	S	M	L
cm	4.5-5	5-6	6-7



AX-0604

# Hammer Finger Splint (Mallet Finger)

Used in cases of fingertip extensor tendon injury. Keeps the tip of the finger in extension.



axolotte.com.tr / Finger Splints

axolotte.com.tr



	1	2	3	4	5	6
Size	S	M	L	XL	XXL	3XL
cm	4-4.5	4.5-5	5.5-6	6-6.5	6.5-7	7-8



AX-0605

## Four Winged Finger Splint

Used to fix the finger in the desired position in case of finger fractures and injuries. Has four winged finger rests. The inner surface is coated with soft plastazote and is made of flexible metal material that can be easily shaped.



	1	2	3	4	
	<b>Size</b>	<b>S</b>	<b>M</b>	<b>L</b>	<b>XL</b>
	cm	5	6	7	8



AX-0606

## Two-Winged Finger Stabilization Splint

The inside is covered with plastozote. Aluminum support provides immobilization of the finger in extension.



axolotte.com.tr / Finger Splints

axolotte.com.tr

	<b>1</b>	<b>2</b>	<b>3</b>
Size	<b>S</b>	<b>M</b>	<b>L</b>
cm	4.5-5	5-6	6-7



AX-0607

## Frog Splint

The inside is covered with plastozote. Aluminum support provides immobilization of the finger in extension. Frog splints keep the distal interphalangeal joint in extension and the proximal interphalangeal joint in an anatomically appropriate flexion position.



	1	2	3
Size	S	M	L
cm	4.5-5	5-6	6-7



The background is a solid olive green color. It features a repeating pattern of small, stylized, smiling faces with radiating lines above them, resembling a sun or a happy expression. On the right side, there is a large, semi-transparent silhouette of a hand with fingers spread, positioned as if reaching towards the center. A thin white horizontal line is located on the left side of the page, extending towards the center.

# Knee Orthoses

AX-0701

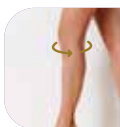
## Simple Knee Support

Made from neoprene material. Provides analgesic effect with compression. Supports the weak muscles around the knee. Provides stabilization in the knee joint.



/ Knee Orthoses

axolotte.com.tr



	1	2	3	4	5
Size	S	M	L	XL	XXL
cm	31-34	34-37	37-40	40-44	44-48

AX-0702

## Simple Knee Support (Standard)

Made from neoprene material. Provides analgesic effect with compression. Supports the weak muscles around the knee. Provides stabilization in the knee joint.





AX-0703

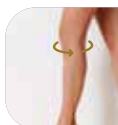
## Patella Supported Knee Brace

Made from neoprene material. The area around the patella is open and supported by a pad. Provides analgesic effect with compression. Supports the weak muscles around the knee. Provides stabilization in the knee joint.



/ Knee Orthoses

axolotte.com.tr

	<b>1</b>	<b>2</b>	<b>3</b>	<b>4</b>	<b>5</b>
Size	<b>S</b>	<b>M</b>	<b>L</b>	<b>XL</b>	<b>XXL</b>
cm	31-34	34-37	37-40	40-44	44-48

AX-0704

## Patella Supported Knee Brace (Standard)

Made from neoprene material. The area around the patella is open and supported by a pad. Provides analgesic effect with compression. Supports the weak muscles around the knee. Provides stabilization in the knee joint. It is comfortable to wear with its Velcro system and can be adjusted to any size.



AX-0705

## Short Patella Supported Knee Brace (Standard)

Made from neoprene material. The area around the patella is open and supported by a pad. Provides analgesic effect with compression. Supports the weak muscles around the knee. Provides stabilization in the knee joint. It is comfortable to wear with its Velcro system and can be adjusted to any size.



AX-0706

## Short Knee Brace with Patella and Ligament Support (Standard)

Made from neoprene material. The area around the patella is open and supported by a pad. In medial and lateral, it is supported by four spiral springs. Provides stabilization in the knee joint with flexible underwires on the side. Supports the ligaments and relieves the load on the knee joint. Provides analgesic effect with compression. Supports the weak muscles around the knee.



AX-0707

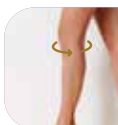
## Knee Brace with Patella and Ligament Support

Made from neoprene material. The area around the patella is open and supported by a pad. In medial and lateral, it is supported by four spiral springs. Provides stabilization in the knee joint with flexible underwires on the side. Supports the ligaments and relieves the load on the knee joint. Provides analgesic effect with compression. Supports the weak muscles around the knee. Provides stabilization in the knee joint.



/ Knee Orthoses

axolotte.com.tr

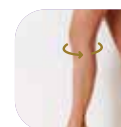
	<b>1</b>	<b>2</b>	<b>3</b>	<b>4</b>	<b>5</b>
Size	<b>S</b>	<b>M</b>	<b>L</b>	<b>XL</b>	<b>XXL</b>
cm	31-34	34-37	37-40	40-44	44-48



AX-0708

## Long Knee Brace with Patella and Ligament Support

“Made from neoprene material. The area around the patella is open and supported by a pad. In medial and lateral, it is supported by four spiral springs. Provides stabilization in the knee joint with flexible underwires on the side. Supports the ligaments and relieves the load on the knee joint. Provides analgesic effect with compression. Provides stabilization in the knee joint and supports the weak muscles around the knee.



1 2 3 4 5

Size	S	M	L	XL	XXL
cm	31-34	34-37	37-40	40-44	44-48



AX-0709

## Long Knee Brace with Patella and Ligament Support (Standard)

“Made from neoprene material. The area around the patella is open and supported by a pad. In medial and lateral, it is supported by four spiral springs. Provides stabilization in the knee joint with flexible underwires on the side. Supports the ligaments and relieves the load on the knee joint. Provides analgesic effect with compression. Provides stabilization in the knee joint and supports the weak muscles around the knee.





AX-0710

## Patella and Ligament Supported Open Top (Flexible Underwire)

Made from neoprene material. The area around the patella is open and supported by a pad. It is open at the top which provides comfortable use for elderly and overweight patients. In medial and lateral, it is supported by four spiral springs. Provides stabilization in the knee joint with flexible underwires on the side. Supports the ligaments and relieves the load on the knee joint. Provides analgesic effect with compression. Provides stabilization in the knee joint and supports the weak muscles around the knee.



	<b>1</b>	<b>2</b>	<b>3</b>	<b>4</b>	<b>5</b>
Size	S	M	L	XL	XXL
cm	31-34	34-37	37-40	40-44	44-48



AX-0711

## Hinged Knee Brace

Made from neoprene material. The area around the patella is open. It is suitable for use after serious surgeries and injuries of the knee. Provides knee joint stabilization with its removable hinged aluminum support on both sides. Provides analgesic effect with compression. Supports the weak muscles around the knee.



/ Knee Orthoses

axolotte.com.tr

	1	2	3	4	5
Size	S	M	L	XL	XXL
cm	31-34	34-37	37-40	40-44	44-48

AX-0712

## Hinged Knee Brace (Standard)

Manufactured of neoprene material. The area around the patella is open. It is suitable for use after serious surgeries and injuries of the knee. With removable hinged aluminum support on both sides, it allows controlled motion and prevent knee hyperextension. Provides analgesic effect with compression.



AX-0713

## Hinged Knee Support (Open Top)

Manufactured of neoprene material. The area around the patella is open. It is suitable for use after serious surgeries and injuries of the knee. With removable hinged aluminum support on both sides, it allows controlled motion and prevent knee hyperextension. Provides analgesic effect with compression.



/ Knee Orthoses

axolotte.com.tr

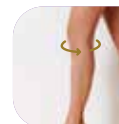
	1	2	3	4	5
Size	S	M	L	XL	XXL
cm	31-34	34-37	37-40	40-44	44-48



AX-0714

## Hinged Knee Support (Open Front)

Manufactured of neoprene material. The area around the patella is open. Since it can be fully opened from the front, it provides comfortable use for the elderly and overweight people who have recently undergone surgery. Velcro fasteners on the upper and lower calves increase stabilization. It is suitable for use after serious surgeries and injuries of the knee.



	1	2	3	4	5
Size	S	M	L	XL	XXL
cm	31-34	34-37	37-40	40-44	44-48



AX-0715

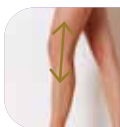
# ACL Supported Knee Brace

Made from neoprene material. The area around the patella is open. Flexible underwires and cross bands on both sides provide stabilization of the cruciate ligaments, joints, and patella.



/ Knee Orthoses

axolotte.com.tr

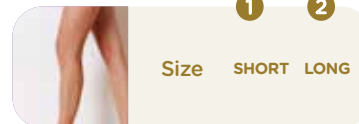


	1	2	3	4	5
Size	S	M	L	XL	XXL
cm	31-34	34-37	37-40	40-44	44-48

AX-0716

## Angle Adjusted Brace

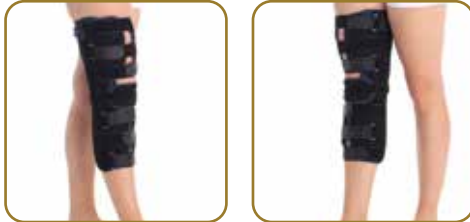
Designed in accordance with the legs anatomical shape. There are aluminum supports on the medial and lateral sides of the orthosis. There is a hinged joint and ROM degree adjustable device in the knee joint section. Flexion/extension angle is adjusted with the angle adjustment mechanism. The aluminum bar and the surfaces in contact with the skin are covered with terry cloth.



AX-0717

## Immobilizer (45-55-65cm)

It is made from sponge fabric for patient comfort. There are removable medial, lateral and posterior aluminum supports that provide immobilization of the knee joint in extension. Produced in 3 sizes according to leg length.



/ Knee Orthoses

axolotte.com.tr



AX-0718

## Knee Braces for Athletes

It is made of neoprene material. Patella and its surroundings are made of EVA material and supported with pads. Provides constant compression and warmth while protecting the knee against impacts. Maintains body temperature, accelerates blood circulation and thus accelerates the healing process. Protects the patella and soft tissues during sports activities.



1 2 3 4 5

Size	S	M	L	XL	XXL
cm	31-34	34-37	37-40	40-44	44-48





AX-0719

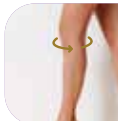
## Camel Hair Wool Knee Pad

Supports joint function. Due to its superior knitting technology, it wraps the knee tightly and locally from four sides, provides heat increase and creates a proprioceptive effect. Its knitted spacing and elastic material provide effective support to weak or tight knee joints. Provides protection against new damages that may occur during the continuation of active mobility. Used for arthritis and rheumatism pain.



/ Knee Orthoses

axolotte.com.tr



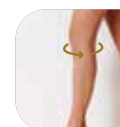
	1	2	3	4	5
Size	S	M	L	XL	XXL
cm	31-34	34-37	37-40	40-44	44-48



AX-0720

## Wool Knee Support

Offers great flexibility and is ideal for sporting activities.  
Non-allergic and comfortable to wear during activities.  
Provide natural therapeutic warmth and breathability.  
Offers great flexibility and is ideal for sporting activities.  
Non-allergic and comfortable to wear during activities.  
Provide natural therapeutic warmth and breathability.



1 2 3 4 5

Size	S	M	L	XL	XXL
cm	31-34	34-37	37-40	40-44	44-48



AX-0721

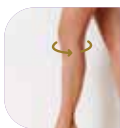
## Patellar Tendon Knee Brace

Made from neoprene material. Has a pad that supports the patella tendon. Provides analgesic effect with compression. It is suitable for Osgood-Schlatter, patellar chondromalacia and patellar tendon disease.



/ Knee Orthoses

axolotte.com.tr



	1	2	3	4	5
Size	S	M	L	XL	XXL
cm	31-34	34-37	37-40	40-44	44-48



AX-0722

## Patellar Tendon Strap (Standard)

Designed and manufactured from neoprene material. Has a pad that supports the patella tendon. Provides analgesic effect with compression. It is suitable for Osgood-Schlatter, patellar chondromalacia and patellar tendon disease.



---

# Foot and Ankle Orthoses

The background is a solid dark red color. It features a repeating pattern of small, light red smiley faces with star-shaped bodies. On the right side, there is a large, faint, light red graphic of a hand with fingers spread, appearing to be part of a larger figure.

AX-0801

## Figure-8 Ankle Support

Made from neoprene material. It increases stabilization with its eight-figure wrapping tapes. Provides analgesic effect with compression. Supports weak muscles and ligaments around the foot and ankle. Provides stabilization in the ankle joint.



AX-0802

## Cross Band Ankle Brace

Made from neoprene material. Increases stabilization with its eight-figure wrapping tapes. Provides analgesic effect with compression. Supports weak muscles and ligaments around the foot and ankle. Provides stabilization in the ankle joint.



	1	2	3	4	5
Size	S	M	L	XL	XXL
cm	21-23	23-25	25-27	27-29	29-31

AX-0803

## Cross Band Ankle Brace (Standard)

Made from neoprene material. Increases stabilization with its eight-figure wrapping tapes. Provides analgesic effect with compression. Supports weak muscles and ligaments around the foot and ankle. Provides stabilization in the ankle joint.







AX-0804

## Malleol Supported Ankle Brace

Made from neoprene material. Increases stabilization with its elastic bands wrapped in 8-figure. Has pads on both sides that support the inner and outer malleoli. Provides analgesic effect with compression. Provides stabilization in the ankle joint by supporting the weak muscles and ligaments around the foot and ankle.



	1	2	3	4	5
Size	S	M	L	XL	XXL
cm	21-23	23-25	25-27	27-29	29-31



AX-0805

## Malleol Supported Ankle Brace (Standard)

Made from neoprene material. Increases stabilization with its elastic bands wrapped in 8-figure. Has pads on both sides that support the inner and outer malleoli. Provides analgesic effect with compression. Provides stabilization in the ankle joint by supporting the weak muscles and ligaments around the foot and ankle.





AX-0806

## Ankle Brace with Ligament Support

Made from neoprene material. Additionally designed Plastic ligaments for malloel support, increase the stability of the ankle. Provides analgesic effect with compression. Supports weak muscles and ligaments around the foot and ankle. Provides stabilization in the ankle joint.



1 2 3 4 5

Size	S	M	L	XL	XXL
cm	21-23	23-25	25-27	27-29	29-31



AX-0807

## Ankle Brace with Ligament Support

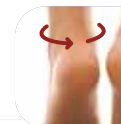
Made from neoprene material. Additionally designed Plastic ligaments for malloel support, increase the stability of the ankle. Provides analgesic effect with compression. Supports weak muscles and ligaments around the foot and ankle. Provides stabilization in the ankle joint.



AX-0808

## Lace Up Ankle Brace

Designed Underwires on the medial and lateral parts of the ankle increase its stability. The designed lace-up system provides better coverage of the foot and ankle and increases stability. Provides analgesic effect with compression. It provides stabilization in the ankle joint by supporting the weak muscles and ligaments around the foot and ankle.



	1	2	3	4	5
Size	S	M	L	XL	XXL
cm	21-23	23-25	25-27	27-29	29-31

AX-0809

## Ankle Brace with Air Cushioning

A product designed with outer plastic part and inside air cushions. Since the inside of the airbag is closed, it will wrap the ankle well according to its anatomy. Provides ankle stability. Due to its all-round airbag, the applied compression can be adjusted as desired. The air pad can be easily inflated using a special mini pump.





AX-0810

## Padded Ankle Brace

Designed according to the joint shape, providing internal and external stabilization of the ankle without hindering natural joint movement. Its outer surface is made of plastic material. Because of its sponge pads on the inner surface, it can be used easily in mild and moderate sprains.



AX-0811

## Gel Pad Ankle Brace

The outer surface is made of plastic material. It is a foot orthosis the inner surface of which consists of gel pads for hot or cold treatment. The gel pad can be frozen for cold treatment. The gel pad also has the feature of being heated in hot water, microwave or oven for hot treatment.







AX-0812

## Rom Walker (Short)

Provides protected freedom of movement after trauma or surgery. The base is made of hard plastic material and the inside is lined with a terry pad. Due to the angle adjustable mechanism, desired flexion and extension adjustments can be made. The range of motion is adjustable in 0-40 degrees of planta flexion and 0-30 degrees of dorsiflexion. Helps early mobilization and provides natural and comfortable walking with its special sole design. The sole of the foot is wide to accommodate edema or bandages. Inner/outer cushioned sole absorbs shock to the foot and ankle during heel strike.



1 2 3

Size	S	M	L
cm	35-39	40-43	44-47



AX-0813

## Rom Walker (Long)

Provides protected freedom of movement after trauma or surgery. The base is made of hard plastic material and the inside is lined with a terry pad. Due to the angle adjustable mechanism, desired flexion and extension adjustments can be made. The range of motion is adjustable in 0-40 degrees of planta flexion and 0-30 degrees of dorsiflexion. Helps early mobilization and provides natural and comfortable walking with its special sole design. The sole of the foot is wide to accommodate edema or bandages. Inner/outer cushioned sole absorbs shock to the foot and ankle during heel strike.



	1	2	3
Size	S	M	L
cm	35-39	40-43	44-47



AX-0814

## Achilles Boot (Short)

Offers both a functional and optimal solution for the post-surgical treatment of Achilles ruptures. The Achilles boot provides immobility, protection and comfort. The base is made of hard plastic, the outer part is made of plastic material and the inside is lined with a terry pad. Due to its special sole system, it provides physiological walking. Supports easy walking due to the cradle system design of the sole.



1 2 3

Size	S	M	L
cm	35-39	40-43	44-47

AX-0815

## Achilles Boot (Long)

Offers both a functional and optimal solution for the post-surgical treatment of Achilles ruptures. The Achilles boot provides immobility, protection and comfort. The base is made of hard plastic, the outer part is made of plastic material and the inside is lined with a terry pad. Due to its special sole system, it provides physiological walking. Supports easy walking due to the cradle system design of the sole.



	1	2	3
Size	S	M	L
cm	35-39	40-43	44-47



AX-0816

## Plaster Shoes

Prevents the plaster base from getting dirty and slipping. Protects the plaster against mechanical damage such as wear and tear. It is a light slipper. It can be easily worn on the cast with elastic bands attached to the velcro straps.



- 1
- 2
- 3
- 4

Size	S	M	L	XL
cm	36-37	38-39	40-41	42-44



AX-0817

## Hallux Valgus Shoes

Provides early mobilization after forefoot surgeries such as hallux valgus. It is also used in diabetic patients to reduce the load on the forefoot in non-healing wounds on the forefoot. Its sole is made of rubber material to prevent slipping. Its upper surface is leather. The slope of the sole reduces the load on the forefoot to a negligible level. Reduces foot edema and shortens the treatment process. The velcro on the front part of product is designed for easy adjustment.



	1	2	3	4
Size	S	M	L	XL
cm	36-37	38-39	40-41	42-44

AX-0818

## Elastic Hallux Valgus Day Splint

It is a practical and comfortable splinter for daily use. Can be used inside wide shoes or slippers. Used for conservative treatment of hallux valgus and after surgery. Prevents the progressive deformity by pushing the thumb out.



AX-0819

## Hallux Valgus Night Splint

Used for conservative treatment of hallux valgus and after surgery. Suitable for night use. It is a therapeutic support that helps heal bunions during sleep. Protects and supports the soft tissue and joint structure in the area by pushing the thumb laterally. Prevents the progression of deformities in the joint and the formation of bunion. Helps the healing of the bunion lesion.







AX-0820

## Reflex AFO (Right-Left)

It is an ankle orthosis made of plastic material. Provides static dorsiflexion assistance and lateral stability for the ankle/foot area. Velcro fastening that covers the foot and ankle provides comfortable application. For use in shoes, it can be cut according to the inner shape of the shoe and used easily.



	1	2	3	4
Size	S	M	L	XL
cm	37-38	39-40	41-42	43-44



AX-0821

## Foot Guard AFO

Made from thermoplastic material. Covered with removable and washable terry cloth. The T apparatus ensures that the ankle is fixed at 90 degrees and prevents internal/external rotations.



	1	2	3
Size	S	M	L
cm	35-39	40-43	43-47

AX-0822

## Dorsiflexion Band (Foot Up)

Made from neoprene material. Used in foot drop problems. Keeps the ankle in dorsiflexion at the desired tension.



The background is a solid orange color. It features a repeating pattern of small, stylized, smiling faces with radiating lines above them, resembling sunbursts or happy expressions. On the right side, there is a large, faint, semi-transparent graphic of a hand with fingers spread, positioned as if reaching towards the center.

---

# Tights & Calf Supports

AX-0901

## Thigh Support

Made from neoprene material. Provides analgesic effect with compression. Reduces edema and supports the muscles. Used for injuries of abductor, adductor, hamstring and quadriceps muscles.



	1	2	3	4	5
Size	S	M	L	XL	XXL
cm	44-48	48-52	52-56	56-62	62-68

/ Tights

axolotte.com.tr



AX-0902

## Thigh Support (Standard)

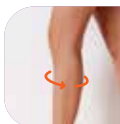
Made from neoprene material. Provides analgesic effect with compression. Reduces edema and supports the muscles. Used for injuries of abductor, adductor, hamstring and quadriceps muscles.



AX-0903

# Calf Support

Made from neoprene material. Increases blood flow, supports the calf and increases temperature. Reduces edema with compression and provides an analgesic effect. It is suitable for use in calf muscle injuries.



	1	2	3	4	5
Size	S	M	L	XL	XXL
cm	29-32	32-35	35-39	39-43	43-48





AX-0904

## Calf Support (Standard)

Made from neoprene material. Increases blood flow, supports the calf and increases temperature. Reduces edema with compression and provides an analgesic effect. It is suitable for use in calf muscle injuries.





AX-0905

## Slimming Tight

Made from neoprene material. The zipper on the side provides ease of use during putting on and taking off. In sports activities it increases blood circulation and metabolism by maintaining body temperature. Reduces edema and supports muscles with its compression effect. Increases performance by supporting muscles. Provides an analgesic effect by providing compression. Used for adductor tendinitis and hip muscle injuries.



/ Tights

axolotte.com.tr



	1	2	3	4	5
Size	S	M	L	XL	XXL
cm	75-85	85-95	95-105	105-115	115-125

A stylized, light brown silhouette of a human head in profile, facing right. A hand is positioned near the ear, with fingers spread. The background is a solid, darker brown color.

**Jaw - Ear - Eye**

---



AX-1001

## Anti Snore Chin Strap

Adapts to all facial contours with its velcro strap system. Helps to prevent chin sagging and breath through the nose. Can also be used after aesthetic operations.



AX-1002

## Pirate Eye Patch

Pirate Eye Patch is made of high-quality fabric that does not irritate the eyes. Because of its special hollow design, it does not put pressure on the eyes. Can also be used for simple and effective treatments for Amblyopia, Astigmatism, and strabismus. Can be used in both eyes.





AX-1003

## Sleep Strip

Made from soft quality fabric that does not irritate the eyes. Is suitable for all head shapes due to its elastic back. Can be used to rest the eyes, protect from light or when suffering from insomnia.



AX-1004

## Prominent Ear Bandage

Helps to protect the operated area from external influences after parotid surgery. The doctor and nurse have no problem adjusting the required tightness (pressure). With its special design, there is no slipping in the area where it is applied. Because of the velcro on it, it can be taken off and put on whenever desired. Thus, it can be used easily in long-term treatments.



A stylized, semi-transparent silhouette of a child's head in profile, facing right, with a hand raised near the forehead. The silhouette is rendered in a lighter shade of the background color.

**Pediatric**

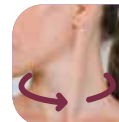
---



AX-1101

## Pediatric Soft Cervical Collar

It is a soft neck collar that restricts neck movements and supports the muscles. Manufactured according to the neck anatomical shape. Produced from 45 density hard sponge material. The fabric part is made of bamboo thread, which is soft and has the ability to keep the skin dry. There is an adjustable velcro at the back. Keeps the neck warm. Has 2 different heights: 8 cm and 10 cm.



1

Size **XXS**  
cm 24-28





AX-1102

## Pediatric Immobilizer

Made of flexible fabric for patient comfort. There are medial, lateral and posterior supports that provide immobilization of the knee joints in extension. Manufactured in 4 sizes according to leg length.



	1	2	3	4
Size	XXS	XS	S	XL
cm	25	30	35	40





AX-1103

## Pediatric Knee Brace with Patella and Ligament Support

Made from neoprene material. The area around the patella is open and supported by a pad. Supported by four spiral springs, medial and lateral. Provides joint stabilization with flexible underwires on both sides. Supports the ligaments and relieves the load on the knee joint. Provides an analgesic effect with compression. Supports the weak muscles around the knee. Provides stabilization in the knee joint.



1 2 3

Size	XXS	XS	S
cm	23-25.5	25.5-28	28-31

AX-1104

## Pediatric Patella Supported Knee Brace

Made from neoprene material. The area around the patella is open and supported by a pad. Provides analgesic effect with compression. Supports the weak muscles around the knee. Provides stabilization in the knee joint.



	1	2	3
Size	XXS	XS	S
cm	23-25.5	25.5-28	28-31





AX-1105

## Pediatric Clavicle Bandage

Provides stabilization in clavicle and sternum-clavicle fractures. Has compression and pain-relieving effects. Its 8-shape design and adjustable velcro straps make it easy to put on and take off.



1 2

Size	<b>XXS</b>	<b>XS</b>
cm	17-20	20-25

AX-1106

## Pediatric Mesh Arm Sling

Made from breathable mesh fabric. Has wide, comfortable and adjustable straps. Allows children to fix the arm-shoulder immobilization by adjusting the arm as desired. It is compatible with both right and left points.



	1	2
Size	XXS	XS
cm	23-26	26-30



AX-1107

## Pediatric Velpau Bandage

Designed to keep the arm and shoulder fixed in the desired position in cases of humerus fractures and shoulder dislocation. It is practical, has adjustable straps and is fixed with a chest strap.



1 2

Size	<b>XXS</b>	<b>XS</b>
cm	23-26	26-30

AX-1108

## Pediatric Flat Foot Brace

Designed to be used in mild sprains of the ankle.  
Provides continuous compression to disperse post-sprain edema. The extra bandage that comes with the product provides extra support to the ankle.





AX-1109

## Pediatric Wrist Splint With Thumb Support

Ensures thumb immobilization and the wrist in a neutral position. Used to restrict thumb and wrist movement in de Quervain and carpal tunnel syndrome (stabilization of the thumb and wrist joint).





AX-1110

## Pediatric Wrist Rest Splint

Provides immobilization of the wrist in a neutral position. Used in wrist immobilization and carpal tunnel syndrome.





AX-1111

## Pirate Eye Patch

Pirate Eye Patch is made of high-quality fabric that does not irritate the eyes. Because of its special hollow design, it does not put pressure on the eyes. Can also be used for simple and effective treatments for Amblyopia, Astigmatism, and strabismus. Can be used in both eyes.



AX-1112

## Pediatric Ligament Supported Ankle Brace

Made from neoprene material. Plastic ligaments which are additionally designed to support the malleoli increase ankle stability. Provides an analgesic effect with compression. Provides stabilization in the ankle joint by supporting the weak muscles and ligaments around the foot and ankle.



	<b>1</b>	<b>2</b>	<b>3</b>
Size	<b>XXS</b>	<b>XS</b>	<b>S</b>
cm	15-17	17-19	19-21



AX-1113

## Pediatric Malleol Supported Ankle Brace

Made from neoprene material. Increases stabilization with its elastic bands wrapped in 8-figures. Has pads on both sides that support the inner and outer malleoli. Provides analgesic effect with compression. Provides stabilization in the ankle joint by supporting the weak muscles and ligaments around the foot and ankle.



	1	2	3
Size	XXS	XS	S
cm	15-17	17-19	19-21

---

# Varicose Veins Socks

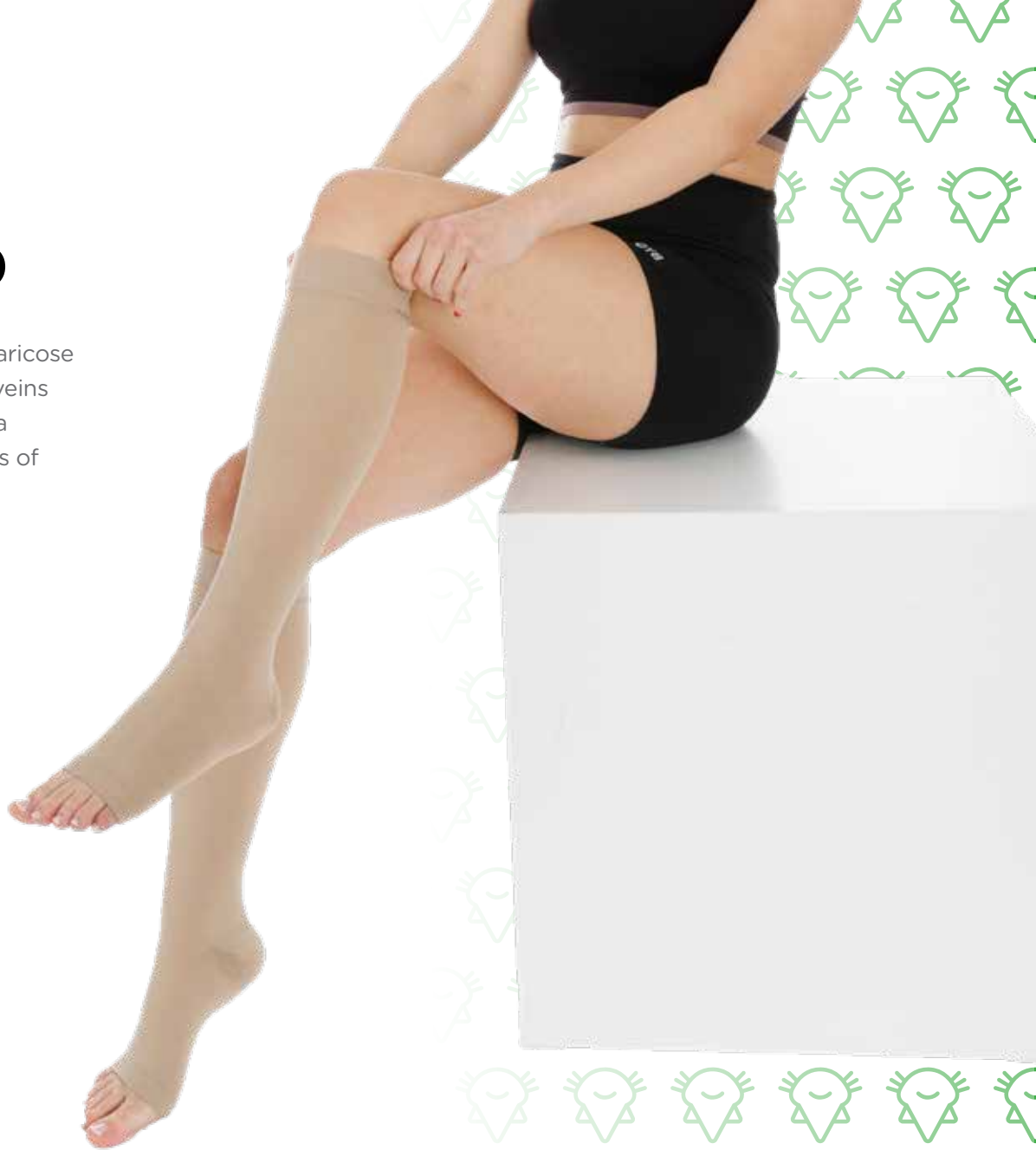
The background is a solid green color. It features a repeating pattern of small, stylized spider-like icons with eight legs and a smiling face. On the right side, there is a large, semi-transparent white graphic of a hand with fingers spread, positioned as if holding or pointing towards the text.

AX-1201

## Knee High Varicose Stocking (Open/Ccl I)

Provides a mild superficial effect. Used in mild varicose veins without edema. Applied for mild varicose veins that occur during and after pregnancy. Used as a healing aid after venous surgery. Used in all kinds of travel.

Class 1 pressure sock, 15-20 mmHg.



	1	2	3	4	5	6	7
cD	29-33	31-35	34-38	36-41	38-43	41-45	43-48
cB	18-20	20-22	22-24	24-26	26-28	28-30	30-

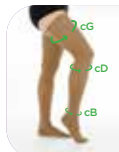


AX-1202

## Thigh High Varicose Stocking (Open Toe/Ccl I)

Provides a mild superficial effect. Used in mild varicose veins without edema. Applied for mild varicose veins that occur during and after pregnancy. Used as a healing aid after venous surgery. Used in all kinds of travel.

Class 1 pressure sock, 15-20 mmHg.



	1	2	3	4	5	6	7
cG	44-50	47-55	50-58	53-62	55-65	58-68	62-73
cD	29-33	31-35	34-38	36-41	38-43	41-45	43-48
cB	18-20	20-22	22-24	24-26	26-28	28-30	30-32

AX-1203

## Pantyhose Varicose Stocking (Open Toe/Ccl I)

Provides a mild superficial effect. Used in mild varicose veins without edema. Applied for mild varicose veins that occur during and after pregnancy. Used as a healing aid after venous surgery. Used in all kinds of travel.

Class 1 pressure sock, 15-20 mmHg.



	1	2	3	4	5	6	7
cG	44-50	47-55	50-58	53-62	55-65	58-68	62-73
cD	29-33	31-35	34-38	36-41	38-43	41-45	43-48
cB	18-20	20-22	22-24	24-26	26-28	28-30	30-32

/ Socks

axolotte.com.tr







AX-1204

## Knee High Varicose Stocking (CloseToe/Ccl I)

Provides a mild superficial effect. Used in mild varicose veins without edema. Applied for mild varicose veins that occur during and after pregnancy. Used as a healing aid after venous surgery. Used in all kinds of travel.

Class 1 pressure sock, 15-20 mmHg.



	1	2	3	4	5	6	7
 cD	29-33	31-35	34-38	36-41	38-43	41-45	43-48
 cB	18-20	20-22	22-24	24-26	26-28	28-30	30-32



AX-1205

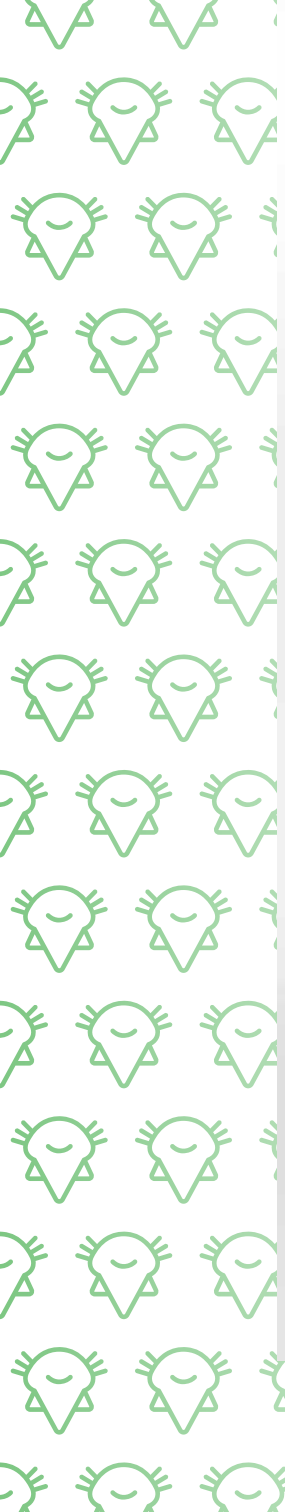
## Thigh High Varicose Stocking (Close Toe/Ccl I)

Provides a mild superficial effect. Used in mild varicose veins without edema. Applied for mild varicose veins that occur during and after pregnancy. Used as a healing aid after venous surgery. Used in all kinds of travel.

Class 1 pressure sock, 15-20 mmHg.



	1	2	3	4	5	6	7
cG	44-50	47-55	50-58	53-62	55-65	58-68	62-73
cD	29-33	31-35	34-38	36-41	38-43	41-45	43-48
cB	18-20	20-22	22-24	24-26	26-28	28-30	30-32



AX-1206

## Pantyhose Varicose Stocking (Close Toe/Ccl I)

Provides a mild superficial effect. Used in mild varicose veins without edema. Applied for mild varicose veins that occur during and after pregnancy. Used as a healing aid after venous surgery. Used in all kinds of travel.

Class 1 pressure sock, 15-20 mmHg.



	1	2	3	4	5	6	7
cG	44-50	47-55	50-58	53-62	55-65	58-68	62-73
cD	29-33	31-35	34-38	36-41	38-43	41-45	43-48
cB	18-20	20-22	22-24	24-26	26-28	28-30	30-32

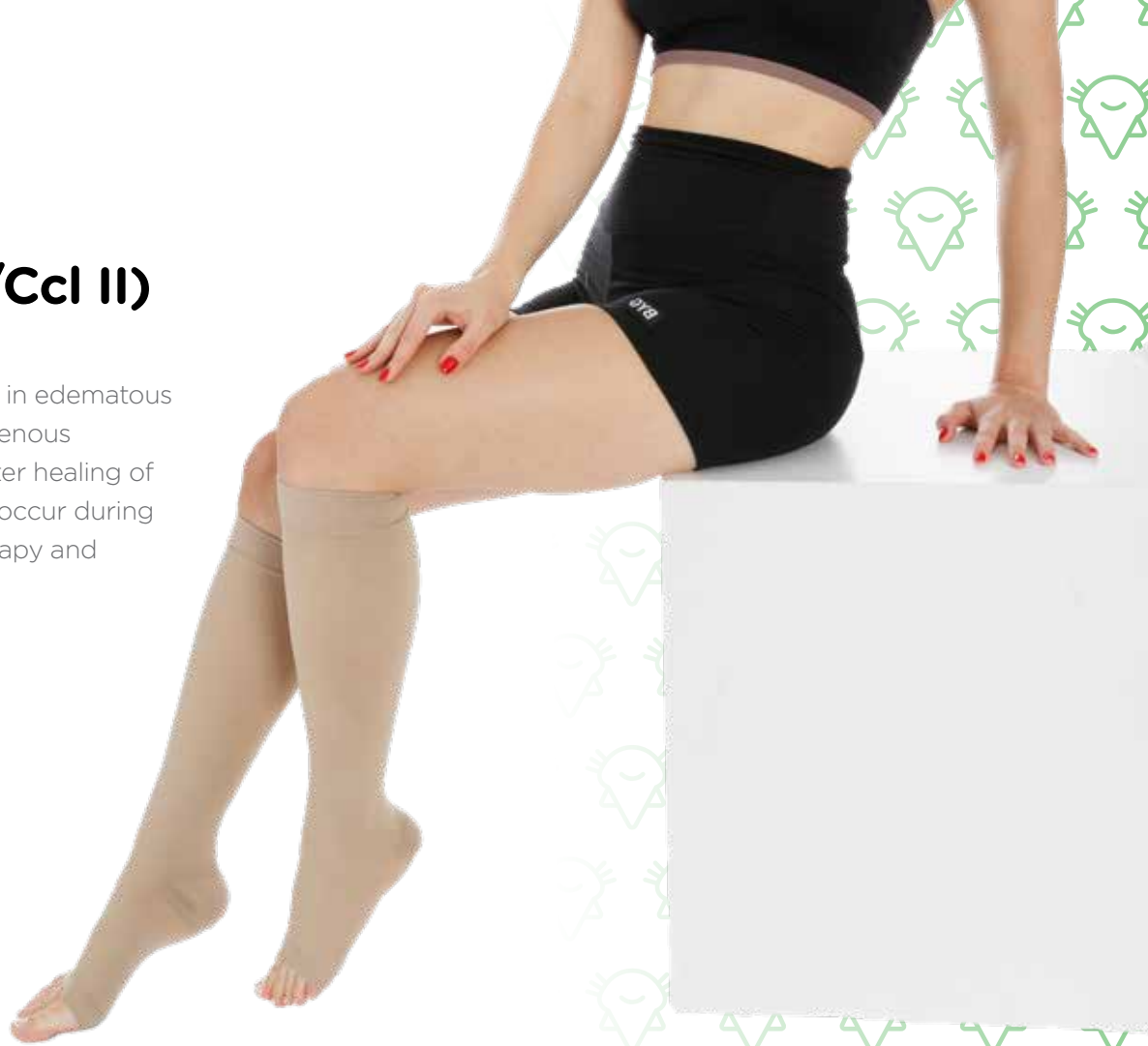


AX-1207

## Knee High Varicose Stocking (Open Toe/Ccl II)

Provides moderate superficial effect. Used in edematous and prominent varicose veins. Applied in venous insufficiency caused by varicosities and after healing of simple ulcers. Used for varicose veins that occur during and after pregnancy. Used after sclerotherapy and stripping.

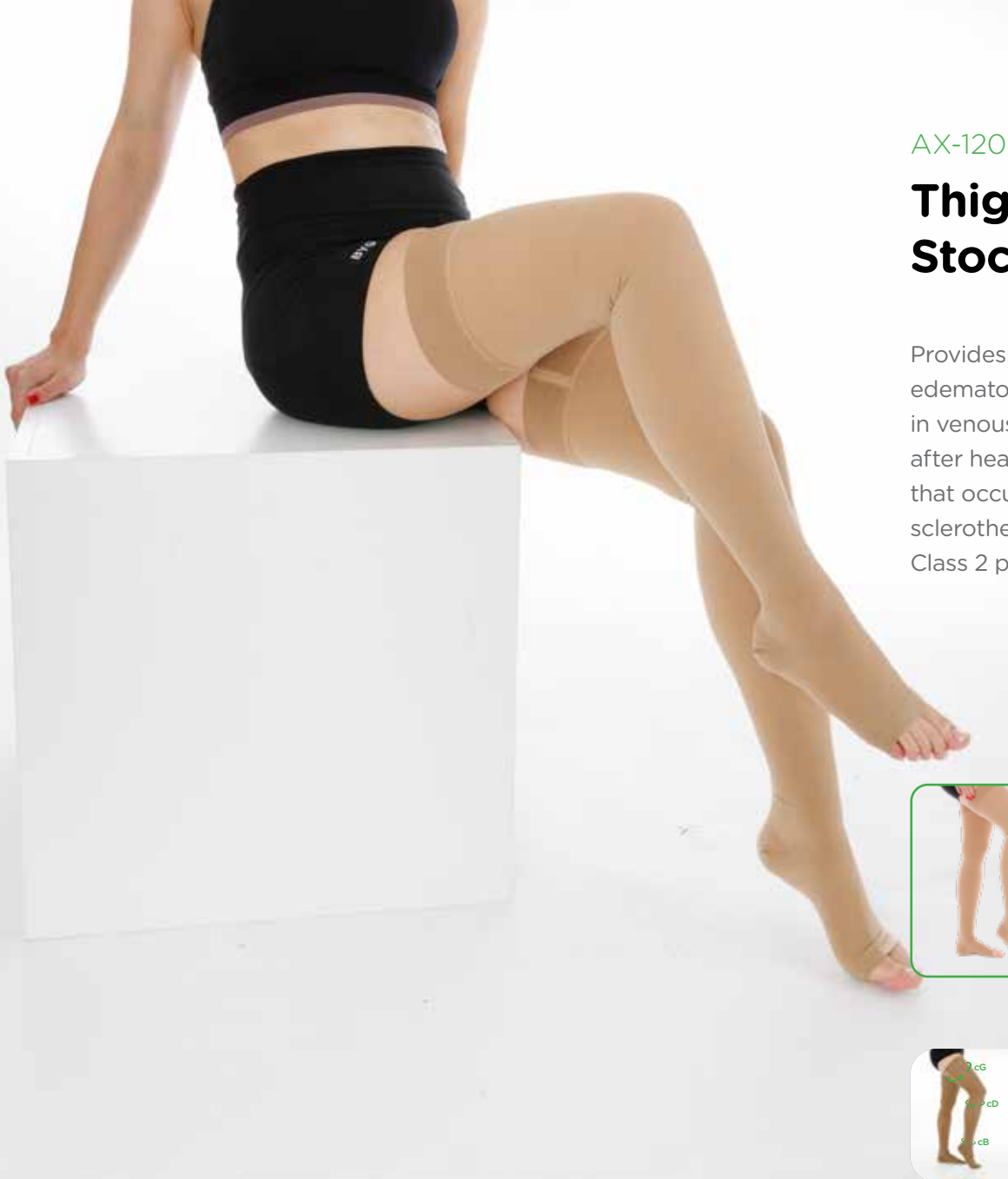
Class 2 pressure sock, 20-30 mmHg.



/ Socks

axolotte.com.tr

	1	2	3	4	5	6	7
cD	29-33	31-35	34-38	36-41	38-43	41-45	43-48
cB	18-20	20-22	22-24	24-26	26-28	28-30	30-32



AX-1208

## Thigh High Varicose Stocking (Open Toe/Ccl II)

Provides moderate superficial effect. Used in edematous and prominent varicose veins. Applied in venous insufficiency caused by varicosities and after healing of simple ulcers. Used for varicose veins that occur during and after pregnancy. Used after sclerotherapy and stripping.

Class 2 pressure sock, 20-30 mmHg.



	1	2	3	4	5	6	7
cG	44-50	47-55	50-58	53-62	55-65	58-68	62-73
cD	29-33	31-35	34-38	36-41	38-43	41-45	43-48
cB	18-20	20-22	22-24	24-26	26-28	28-30	30-32



AX-1209

## Pantyhose Varicose Stocking (Open Toe/Ccl II)

Provides moderate superficial effect. Used in edematous and prominent varicose veins. Applied in venous insufficiency caused by varicosities and after healing of simple ulcers. Used for varicose veins that occur during and after pregnancy. Used after sclerotherapy and stripping.

Class 2 pressure sock, 20-30 mmHg.



	1	2	3	4	5	6	7
cG	44-50	47-55	50-58	53-62	55-65	58-68	62-73
cD	29-33	31-35	34-38	36-41	38-43	41-45	43-48
cB	18-20	20-22	22-24	24-26	26-28	28-30	30-32





AX-1210

## Knee High Varicose Stocking (CloseToe/Ccl II)

Provides moderate superficial effect. Used in edematous and prominent varicose veins. Applied in venous insufficiency caused by varicosities and after healing of simple ulcers. Used for varicose veins that occur during and after pregnancy. Used after sclerotherapy and stripping.

Class 2 pressure sock, 20-30 mmHg.



	1	2	3	4	5	6	7
cD	29-33	31-35	34-38	36-41	38-43	41-45	43-48
cB	18-20	20-22	22-24	24-26	26-28	28-30	30-32



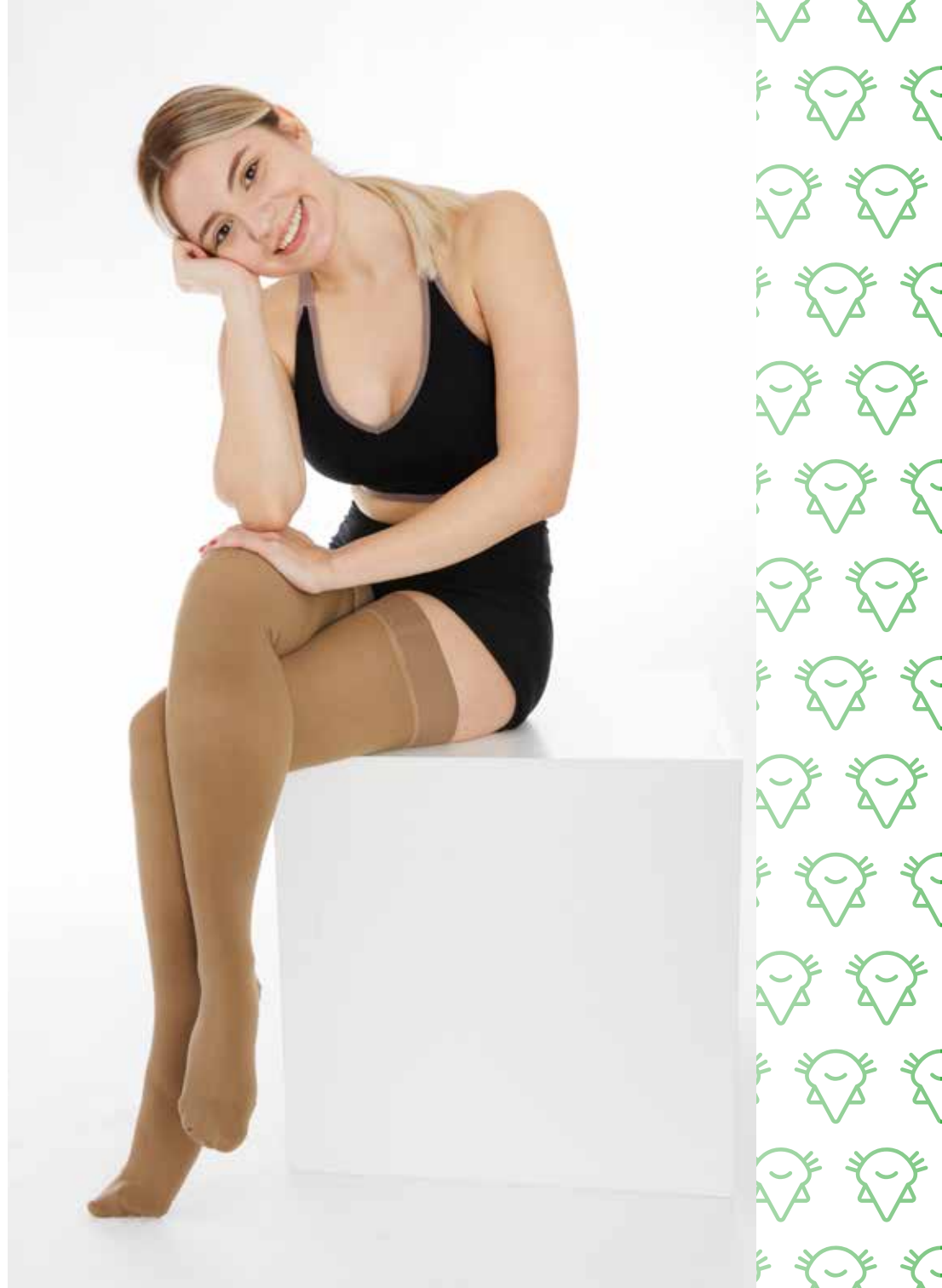
AX-1211

## Thigh High Varicose Stocking (Close Toe/Ccl II)

Provides moderate superficial effect. Used in edematous and prominent varicose veins. Applied in venous insufficiency caused by varicosities and after healing of simple ulcers. Used for varicose veins that occur during and after pregnancy. Used after sclerotherapy and stripping.  
Class 2 pressure sock, 20-30 mmHg.



	1	2	3	4	5	6	7
cG	44-50	47-55	50-58	53-62	55-65	58-68	62-73
cD	29-33	31-35	34-38	36-41	38-43	41-45	43-48
cB	18-20	20-22	22-24	24-26	26-28	28-30	30-32





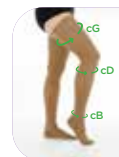


AX-1212

## Pantyhose Varicose Stocking (Close Toe/Ccl II)

Provides moderate superficial effect. Used in edematous and prominent varicose veins. Applied in venous insufficiency caused by varicosities and after healing of simple ulcers. Used for varicose veins that occur during and after pregnancy. Used after sclerotherapy and stripping.

Class 2 pressure sock, 20-30 mmHg.



	1	2	3	4	5	6	7
cG	44-50	47-55	50-58	53-62	55-65	58-68	62-73
cD	29-33	31-35	34-38	36-41	38-43	41-45	43-48
cB	18-20	20-22	22-24	24-26	26-28	28-30	30-32



AX-1213

## Knee High Varicose Stocking (Open Toe/Ccl III)

Provides superficial and deep effects. Used in edematous and prominent varicose veins. Used in chronic venous insufficiency due to post-traumatic syndrome. Applied in post-traumatic edema and venous ulcerations. Applied for secondary varicosities after stasis dermatitis. Used after sclerotherapy and stripping in white atrophy.

Class 3 pressure sock, 30-45 mmHg.



/ Socks

axolotte.com.tr

	1	2	3	4	5	6	7
cD	29-33	31-35	34-38	36-41	38-43	41-45	43-48
cB	18-20	20-22	22-24	24-26	26-28	28-30	30-32



AX-1214

## Thigh High Varicose Stocking (Open Toe/Ccl III)

Provides superficial and deep effects. Used in edematous and prominent varicose veins. Used in chronic venous insufficiency due to post-traumatic syndrome. Applied in post-traumatic edema and venous ulcerations. Applied for secondary varicosities after stasis dermatitis. Used after sclerotherapy and stripping in white atrophy.  
 Class 3 pressure sock, 30-45 mmHg.



	1	2	3	4	5	6	7
cG	44-50	47-55	50-58	53-62	55-65	58-68	62-73
cD	29-33	31-35	34-38	36-41	38-43	41-45	43-48
cB	18-20	20-22	22-24	24-26	26-28	28-30	30-32

AX-1215

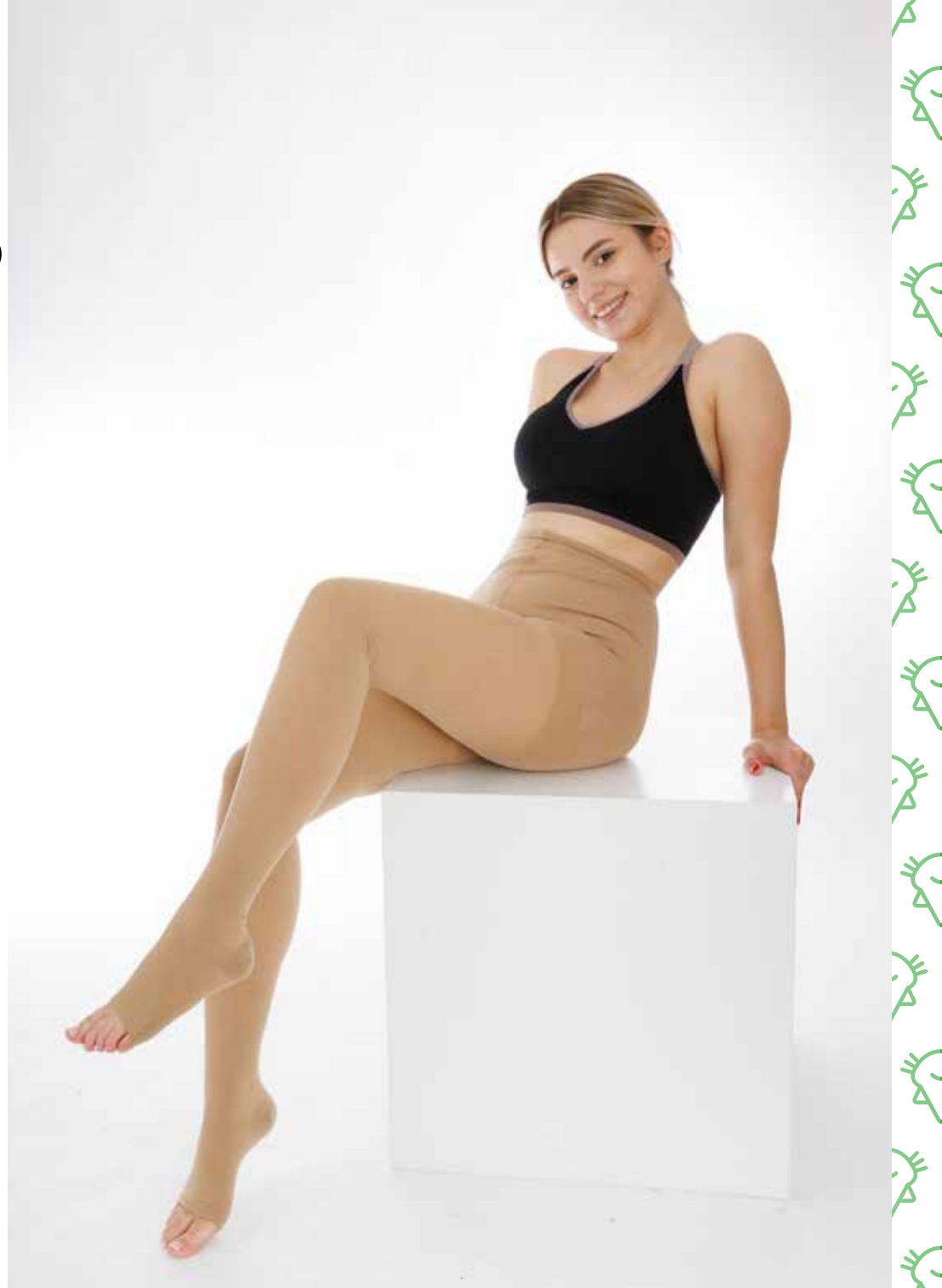
## Pantyhose Varicose Stocking (Open Toe/Ccl III)

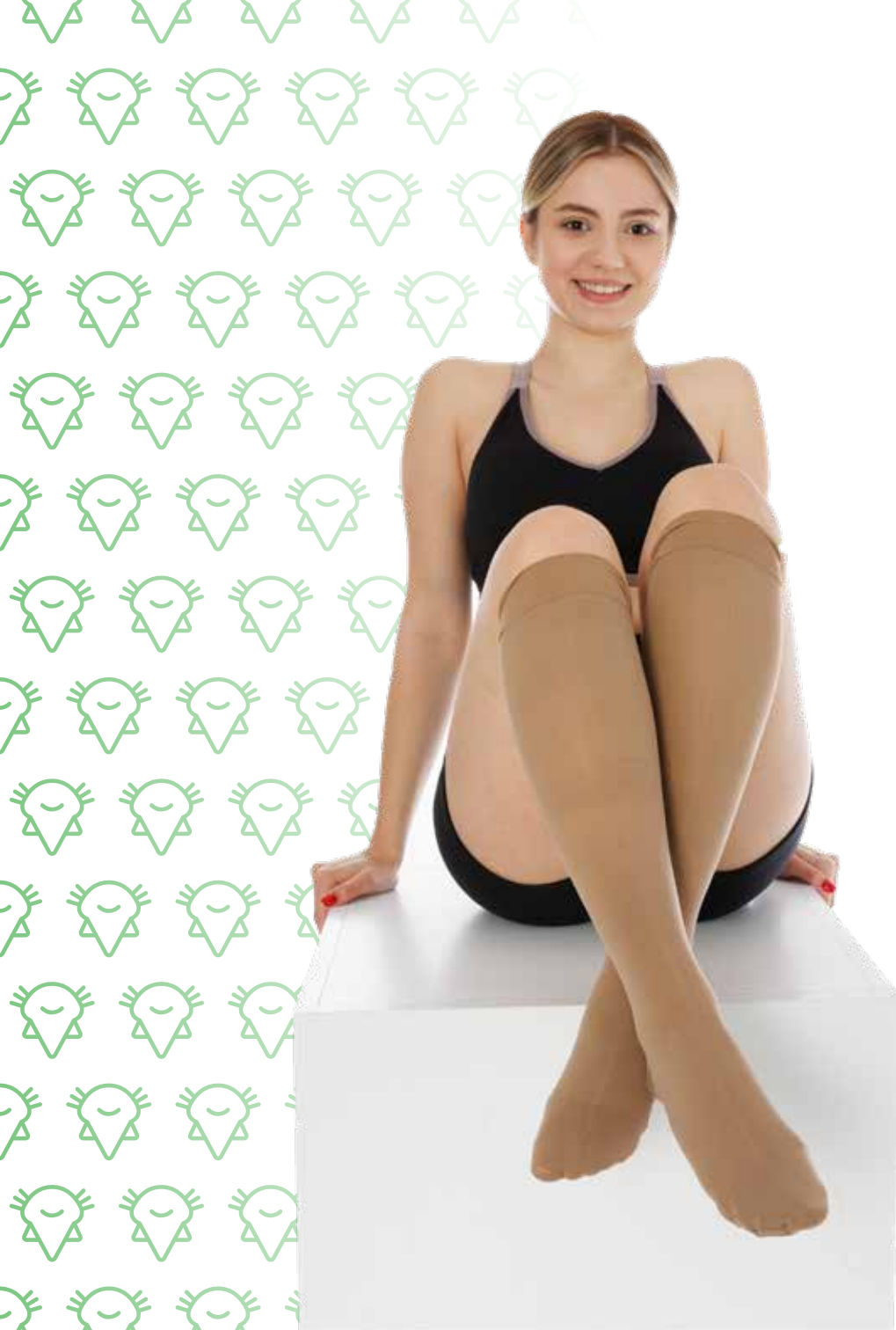
Provides superficial and deep effects. Used in edematous and prominent varicose veins. Used in chronic venous insufficiency due to post-traumatic syndrome. Applied in post-traumatic edema and venous ulcerations. Applied for secondary varicosities after stasis dermatitis. Used after sclerotherapy and stripping in white atrophy.

Class 3 pressure sock, 30-45 mmHg.



	1	2	3	4	5	6	7
cG	44-50	47-55	50-58	53-62	55-65	58-68	62-73
cD	29-33	31-35	34-38	36-41	38-43	41-45	43-48
cB	18-20	20-22	22-24	24-26	26-28	28-30	30-32







AX-1216

## Knee High Varicose Stocking (CloseToe/Ccl III)

Provides superficial and deep effects. Used in edematous and prominent varicose veins. Used in chronic venous insufficiency due to post-traumatic syndrome. Applied in post-traumatic edema and venous ulcerations. Applied for secondary varicosities after stasis dermatitis. Used after sclerotherapy and stripping in white atrophy.

Class 3 pressure sock, 30-45 mmHg.



	1	2	3	4	5	6	7
 cD	29-33	31-35	34-38	36-41	38-43	41-45	43-48
 cB	18-20	20-22	22-24	24-26	26-28	28-30	30-32



AX-1217

## Thigh High Varicose Stocking (Close Toe/Ccl III)

Provides superficial and deep effects. Used in edematous and prominent varicose veins. Used in chronic venous insufficiency due to post-traumatic syndrome. Applied in post-traumatic edema and venous ulcerations. Applied for secondary varicosities after stasis dermatitis. Used after sclerotherapy and stripping in white atrophy.

Class 3 pressure sock, 30-45 mmHg.



	1	2	3	4	5	6	7
cG	44-50	47-55	50-58	53-62	55-65	58-68	62-73
cD	29-33	31-35	34-38	36-41	38-43	41-45	43-48
cB	18-20	20-22	22-24	24-26	26-28	28-30	30-32





AX-1218

## Pantyhose Varicose Stocking (Close Toe/Ccl III)

Provides superficial and deep effects. Used in edematous and prominent varicose veins. Used in chronic venous insufficiency due to post-traumatic syndrome. Applied in post-traumatic edema and venous ulcerations. Applied for secondary varicosities after stasis dermatitis. Used after sclerotherapy and stripping in white atrophy.

Class 3 pressure sock, 30-45 mmHg.



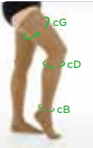
	1	2	3	4	5	6	7
cG	44-50	47-55	50-58	53-62	55-65	58-68	62-73
cD	29-33	31-35	34-38	36-41	38-43	41-45	43-48
cB	18-20	20-22	22-24	24-26	26-28	28-30	30-32



AX-1219

## Pregnancy Varicose Socks

Used in cases of varicose vein pain experienced during pregnancy. Provides blood circulation by applying compression to the leg and calf parts during the treatment of high-level varicose veins. It is very useful for varicose veins, which disturb the expectant mother during pregnancy due to the appearance it gives and the pain it causes. Has a relaxing feature and prevents the disease from progressing.



	1	2	3	4	5	6	7
cG	44-50	47-55	50-58	53-62	55-65	58-68	62-73
cD	29-33	31-35	34-38	36-41	38-43	41-45	43-48
cB	18-20	20-22	22-24	24-26	26-28	28-30	30-32





# Foot Health Products

---

AX-1301

## Starflex Insole

Produced from special thermoplastic. It is a leather-covered insole with longitudinal and metatarsal support on top and bottom. Reduces the load and stress on the joints by ensuring the regular development of the standing body graph.



	1	2	3	4	5	6
Size	XS	S	M	L	XL	XXL
cm	35-36	37-38	39-40	41-42	43-44	45-46



AX-1302

## Starflex Insole (With Epine)

Specially made of thermoplastic material. It is an insole with silicone and metatarsal support in the heel part. The use of insoles eases the load on the joints and reduces pain.



1 2 3 4 5 6

Size	XS	S	M	L	XL	XXL
cm	35-36	37-38	39-40	41-42	43-44	45-46

AX-1303

## Cork Insoles

The lower layer of cork is covered with special leather. Provides longitudinal and metatarsal support.



	1	2	3	4	5	6
Size	XS	S	M	L	XL	XXL
cm	35-36	37-38	39-40	41-42	43-44	45-46



AX-1304

## Cork Insoles (With Epine)

It is a cork orthopedic insole designed according to the anatomical form of the foot. The surface in contact with the foot is covered with high quality leather. Epine support reduces the load on the heel. Its design, which facilitates natural walking, allows the body load to be distributed evenly on the sole of the foot. It reduces the load on the joints. It can be easily used in shoes with its non-slip structure on the bottom surface.



1 2 3 4 5 6

Size	XS	S	M	L	XL	XXL
cm	35-36	37-38	39-40	41-42	43-44	45-46

AX-1305

## UCBL Insoles

It corrects foot deformities and stops the progression of the deformity. It is a type of orthosis that covers the foot and distributes the entire load of the body equally to the foot. It completely grasps the heel and supports the arch of the foot. It is used for flat soles, excessively curved sole, metatarsal collapse, Hallux rigidus (stiff thumb) deformities.



	1	2	3	4	5	6
Size	XS	S	M	L	XL	XXL
cm	35-36	37-38	39-40	41-42	43-44	45-46



AX-1306

## Steel Insoles

Supported by a stainless steel bridge and the upper part is made of leather. It is an insole with metatarsal arch support. It is used in the treatment of Pes Planus, Pes Cavus, Metatarsalgia and Epin Kalkanei deformities.



axolotte.com.tr / Foot Health Products

axolotte.com.tr

1 2 3 4 5 6

Size	XS	S	M	L	XL	XXL
cm	35-36	37-38	39-40	41-42	43-44	45-46



AX-1307

## Fabric Covered Silicone Insoles

It is made of special silicone material that does not cause allergies and does not harm the skin. In addition to its silicone insoles, the fact that it is covered with fabric makes its use convenient and comfortable.

	<b>1</b>	<b>2</b>	<b>3</b>	<b>4</b>	<b>5</b>	<b>6</b>
Size	<b>XS</b>	<b>S</b>	<b>M</b>	<b>L</b>	<b>XL</b>	<b>XXL</b>
cm	35-36	37-38	39-40	41-42	43-44	45-46





AX-1308

## Silicone Insoles With Anatomical Support

Made of special silicone material that does not cause allergies and does not harm the skin. Used as a pain absorber in cases of Fat Pad, Hyperkeratosis and Planter Fasciitis. Provides anatomical support and allows evenly distribution of the pressure on the sole. Provides relief from pain caused by disorders such Pes Cavus. Relieves partial pressure and tension in the feet caused by standing for a long time and posture disorders. The low-density structure of the blue area increases adaptation to the sole of the foot and protects sensitive and bony areas.



1 2 3 4 5 6

Size	XS	S	M	L	XL	XXL
cm	35-36	37-38	39-40	41-42	43-44	45-46

AX-1309

## Arc Supported Silicone Insoles

Made of special silicone material that does not cause allergies and does not harm the skin. Ensures balanced distribution of body load on the foot. Reduces the load and stress on the joints by absorbing reaction forces. Unlike other insoles, it has silicone support in the arch area.



	1	2	3	4	5	6
Size	XS	S	M	L	XL	XXL
cm	35-36	37-38	39-40	41-42	43-44	45-46



AX-1310

## Massage Insoles

Compressed gel parts provide a massage effect and provide comfortable walking. The thin gel sole suitable for all types of shoes can be used easily without making your shoes smaller. By reducing the pressure on the foot, it relieves the knee, ankle and back pain.



- 1
- 2
- 3
- 4
- 5
- 6

Size	XS	S	M	L	XL	XXL
cm	35-36	37-38	39-40	41-42	43-44	45-46

AX-1311

## Silicone Insoles

Made of special silicone material that does not cause allergies and does not harm the skin. Provides anatomical support and allows the pressure on the sole to be distributed evenly. Has a relaxing and comfortable effect. Used for pes planus, fingertip deformation and sole pains. Can be used easily while walking, doing sports and working.



	1	2	3	4	5	6
Size	XS	S	M	L	XL	XXL
cm	35-36	37-38	39-40	41-42	43-44	45-46



AX-1312

## Silicone Gel Insoles

Made of durable, lightweight, soft and shock absorbing material. Is non-slip and allows the feet to breathe. It is quick-drying and sweat-absorbing.



	1	2	3
Size	S	M	L
cm	34-35	36-37	38-40

AX-1313

## Silicone Half Insoles

Made of special silicone material that does not cause allergies and does not harm the skin. Relief the pains caused by disorders such as Pes Cavus. Relieves partial pressure and tension in the feet caused by standing for a long time and posture disorders. Due to its special design, it protects sensitive and bony areas by increasing adaptation to the sole of the foot.



	1	2	3
Size	S	M	L
cm	34-37	38-41	42-45



AX-1314

## Silicone Booties Socks

Used for heel pain, heel spurs, heel cracks and callus problems. It is worn on the feet like socks. Cream or vaseline can be applied inside before wearing. If cream or vaseline is not applied, it should be powdered. Can be used while wearing shoes.



	1	2	3
Size	S	M	L
cm	34-37	38-41	42-45



AX-1315

## Epin Heel Cup (Polyurethane)

Made of polyurethane material. Absorbs and reduces impacts on the waist, knee and ankle joints. Used in cases of heel spurs.



	1	2	3
Size	S	M	L
cm	34-37	38-41	42-45





AX-1316

## Epin Heel Cover - Fabric Covered Adhesive Silicone

Made of special silicone material that does not cause allergies and does not harm the skin. Can be used in painful conditions of the heel and in cases of heel spurs. Due to its adhesive feature, it remains stable in the shoe.



1 2 3

Size	S	M	L
cm	34-37	38-41	42-45

AX-1317

## Silicone Epin Heel Cover

Made of special silicone material that does not cause allergies and does not harm the skin. Reduces Achilles tendon tension by acting as a cushion on the heel. Used to relieve the discomfort caused by the bone protrusion in the heel (Epin Calcanie/heel spur). The low-intensity blue area is designed to harbor heel spurs.



	1	2	3
Size	S	M	L
cm	34-37	38-41	42-45



AX-1318

## Adhesive Gel Heel Pad (Women)

Provides evenly distribution of the pressure to the foot. Minimize the pain and impacts in the heels. The gel used in the red areas of the insole is softer than the other areas. The red areas are specially made for heel spur discomfort. It is especially recommended for those who have to stand for long periods of time during the day, athletes and those with heel spur disease. Due to its self-adhesive structure, it remains fixed inside the shoe.



	1	2	3
Size	S	M	L
cm	34-35	36-37	38-40

AX-1319

## Adhesive Gel Heel Pad (Men)

Provides evenly distribution of the pressure to the foot. Minimize the pain and impacts in the heels. The gel used in the blue areas of the insole is softer than the other areas. The blue areas are specially made for heel spur discomfort. It is especially recommended for those who have to stand for long periods of time during the day, athletes and those with heel spur disease.



	1	2	3
Size	S	M	L
cm	34-37	38-41	42-45



AX-1320

## Perforated Heel Protector

Made from qualified silicone material for dynamic energy support and cushioning. With its excellent shock absorption capacity, it relieves foot pain and protects your feet from injury. Protects the soles of the feet from cracking and moisture. Due to its self-adhesive structure, it remains fixed inside the shoe.



AX-1321

## Inner - Outer Wedge Insoles

Made of special silicone material that does not cause allergies and does not harm the skin. Used to provide balance on the inside and outside feet.



	1	2	3
<b>Size</b>	<b>S</b>	<b>M</b>	<b>L</b>
cm	34-37	38-41	42-45



AX-1322

## Height Increase Shoe Insoles with Air Cushion

It is easy to use, soft and comfortable. Reduces the pressure on the knee joints while walking or running. Fits easily with all types of shoes. Because of its special structure its height can be adjusted. You can use it for many years.



AX-1323

## Arc Supported Fabric Covered Adhesive Silicone

Made of special silicone material that does not cause allergies and does not harm the skin. Reduces sole stress by supporting the arch area in cases of flat feet. Due to its adhesive feature, it remains stable in the shoe.



	1	2
Size	S	M
cm	35-40	40-45





AX-1324

## Arch Support Socks

Eliminate flat foot discomfort in your feet. Allows you to do your daily activities such as walking and running in the most comfortable way. Wearable arch support socks fill your foot space and perform a supportive function.



	1	2	3
Size	S	M	L
cm	34-37	38-41	42-45

AX-1325

## Silicone Arch Support Sock

Eliminate flat foot discomfort in your feet. Allows you to do your daily activities such as walking and running in the most comfortable way. Wearable arch support socks fill your foot space and perform a supportive function.



	1	2	3
Size	S	M	L
cm	34-37	38-41	42-45

AX-1326

## Anti-Slip Front Insoles

Made from high quality, durable medical grade silicone material. Has adhesive on the bottom and does not slip in shoes. Can be washed and reused after use.





AX-1327

## Invisible Height Increase Insoles

The product is made of quality silicone material. Increase the height by up to 4 cm. Reduces foot heel pain. Good for pain caused by cracks.

	1	2	3
Size	S	M	L
cm	34-37	38-41	42-45



AX-1328

## Shoe Heel Striking Prevention Gel Pad

It is compatible with every shoe model. The gel structure adheres to the shoe on its own. It is reusable. It is especially suitable for use in the heel area. It adapts to your shoes with its flexible and thin structure.



AX-1329

## Shoe Heel Striking Prevention Pad

The protector prevents your shoe from hitting your foot from behind. Prevents problems such as wounds and blisters on the top of your heels. At the same time, it makes your shoes easier to use by filling the space in the shoe.



AX-1330

## T-Shaped Shoe Heel Striking Prevention Gel Pad

The silicone on the inside of the shoe will not harm your skin and will protect your foot health. It is very practical to use. Simply remove the protective film from the adhesive surface and place it on the inside of your shoe.



AX-1331

## Gel Metatarsal Pad with Toe Ring

It balances the load distribution on the metatarsal heads. Resolves muscle spasm and eliminates the pain caused by muscle contraction. Forms the metatarsal arch of the foot.





AX-1332

## Gel Metatarsal Pad with Toe Spreader

It balances the load distribution on the metatarsal heads. Resolves muscle spasm and eliminates the pain caused by muscle contraction. Forms the metatarsal arch of the foot.





AX-1333

## Splint Roller Bunion Protector

Due to its high-quality silicone structure, it will not disturb your feet. In addition to helping your toes stand correctly with its roller structure, It will help your feet heal quickly by preventing deformation. Socks can be worn under shoes.



AX-1334

## Metatarsal Sleeve with Gel Cushion

It will prevent bone growth (hallux valgus deformity) in your foot. A protector that will help heal deformities in your fingers. It will help you get rid of the problems you experience with regular use. You can wear it under shoes and socks.





AX-1335

## Gel Metatarsal Pad

It is produced with special silicone that does not cause any damage or allergies. It is durable and suitable for long-term use. Metatarsal helps relieve pain by absorbing particle pressure. Due to the adhesive Szeliga, it remains stable in the shoe.



	1	2
Size	M	L
cm	35-40	40-45



AX-1336

## Gel Bunion Corrector Toe Protector

Prevents pressure interruptions caused by shoes. It is used in cases of hallux valgus.





AX-1337

## Bunion Spreader In Gel With Double Ring 1 pc

Made of high-quality silicone material. Separates the first and second toes with its roller part, prevents the progression of hallux valgus deformity and relieves pain in the area with its bunion protective part. Due to its soft structure, it does not cause any discomfort. Suitable for both right and left feet.



AX-1338

## Five Toes Bunion Protector

It spreads your fingers apart. The foot cushion prevents slipping between the toes and rash. It is dominated and used by dislocations in the finger bones. The toe protector is suitable for users who stand and work all day. Shoes and socks can be worn inside.



AX-1339

## Splint Bunion Protector

Made with gel pads and elastic fabric. It relieves discomfort caused by metatarsalgia on the sole of the foot and provides relief by massaging the bunion area. Its design ensures that the gel protector always remains in the correct position. It adapts to all foot sizes with its elastic and soft fabric. It can be used easily in all types of shoes.





AX-1340

## Silicone Hammer Finger Cushion

It protects the toes and prevents them from curling. It helps in the treatment of hammer finger.





AX-1341

## Hallux Valgus Socks

Made with gel pads and elastic fabric. It relieves discomfort caused by metatarsalgia on the sole of the foot and provides relief by massaging the bunion area. Its design ensures that the gel protector always remains in the correct position. It adapts to all foot sizes with its elastic and soft fabric. It can be used easily in all types of shoes.



	1	2
Size	M	L
cm	35-40	40-45



AX-1342

## Hallux Valgus Splints

Made from high quality, durable medical grade silicone material. Can be used while doing yoga or even jogging. Can be used in wide-toed athletic shoes. The toe straightener is perfect for bunion, hallux valgus, Hammer toes, claw toes and other foot problems.



AX-1343

## Silicone Callus Toe Ring

Can be used for all kinds of problems related to toes.  
Used as a preventative in diabetic patients.



	1	2	3
Size	S	M	L
cm	34-37	38-41	42-45



AX-1344

# Silicone Callus Toe Sleeve

It is used for calluses, ingrown toenails and similar problems related to toes. Diabetes plays a protective role in patients.



	1	2	3
Size	S	M	L
cm	34-37	38-41	42-45

AX-1345

## Silicone Callus Pads (Standard)

Prevents the formation of calluses caused by friction or pressure. Relieves the pain of existing calluses. Accelerates the healing process by acting as a buffer on the calloused area. Due to its strong adhesive, it remains fixed in place for a long time.



AX-1346

## Silicone 5-Toe Spacer

Since it has a soft structure, it will not harm your toes at all. It is a high-quality product produced for deformities in the fingers. It can also be used while applying nail polish. It is produced to correct deformities in the fingers. There are two pieces, Right and Left foot.





AX-1347

## 3-Loop Hammer Toe Cushion

It is a protector that will help you get rid of hammer toe discomfort. This protector, which you will wear on your 3 fingers, will keep your fingers in a straight position and support them with its silicone pad. This way, your fingers will not hurt and you will feel relaxed. You can easily use it under clothing such as socks and shoes. The material is flexible and silicone.

	1	2	3
Size	S	M	L
cm	34-37	38-41	42-45





AX-1348

## Silicone Toe Separator

Made of special silicone material that does not cause allergies and does not harm the skin. Prevents the progression of foot deformation and helps eliminate deformations. Allows overlapping fingers to return to their normal position.





AX-1349

## Fabric Covered Flip Flop Reel

It is comfortable to use. Thanks to its wearable fabric structure, it provides a more convenient and comfortable use while standing compared to other silicone finger rollers.



AX-1350

## Ring Inger Spreader

Helps heal hammertoe disease. Prevents irritation caused by overlapping fingers. The roller you place between two fingers will not disturb you due to its silicone structure.



	1	2	3
Size	S	M	L
cm	34-37	38-41	42-45



AX-1351

## Little Finger Roller Bunion Protector

Made of special silicone material that does not cause allergies and does not harm the skin. Due to the bunion protector, you can prevent deformities in your little finger. Takes the shape of your toe and provides comfort all day long. Silicone finger protector can be washed and reused. Due to the special silicone structure, no size or number is required, it fits all foot sizes.



AX-1352

# Ingrowing Toenail Protector

Narrow, pointed-toe shoes cause ingrown toenails. By using the Ingrown Nail Protector, you can put an end to your bad days due to ingrown nails. You can put the gel cap on your finger to prevent the shoe from applying pressure. Thanks to its special structure, it takes the shape of your finger and provides comfort all day long.





AX-1353

## Ingrown Nail Removal Apparatus

Helps you solve your painful ingrown nail problem. Can remove your problematic nail from the skin by pulling it from two directions and reduce your pain in a short time.



AX-1354

## Silicone Exercise Ball

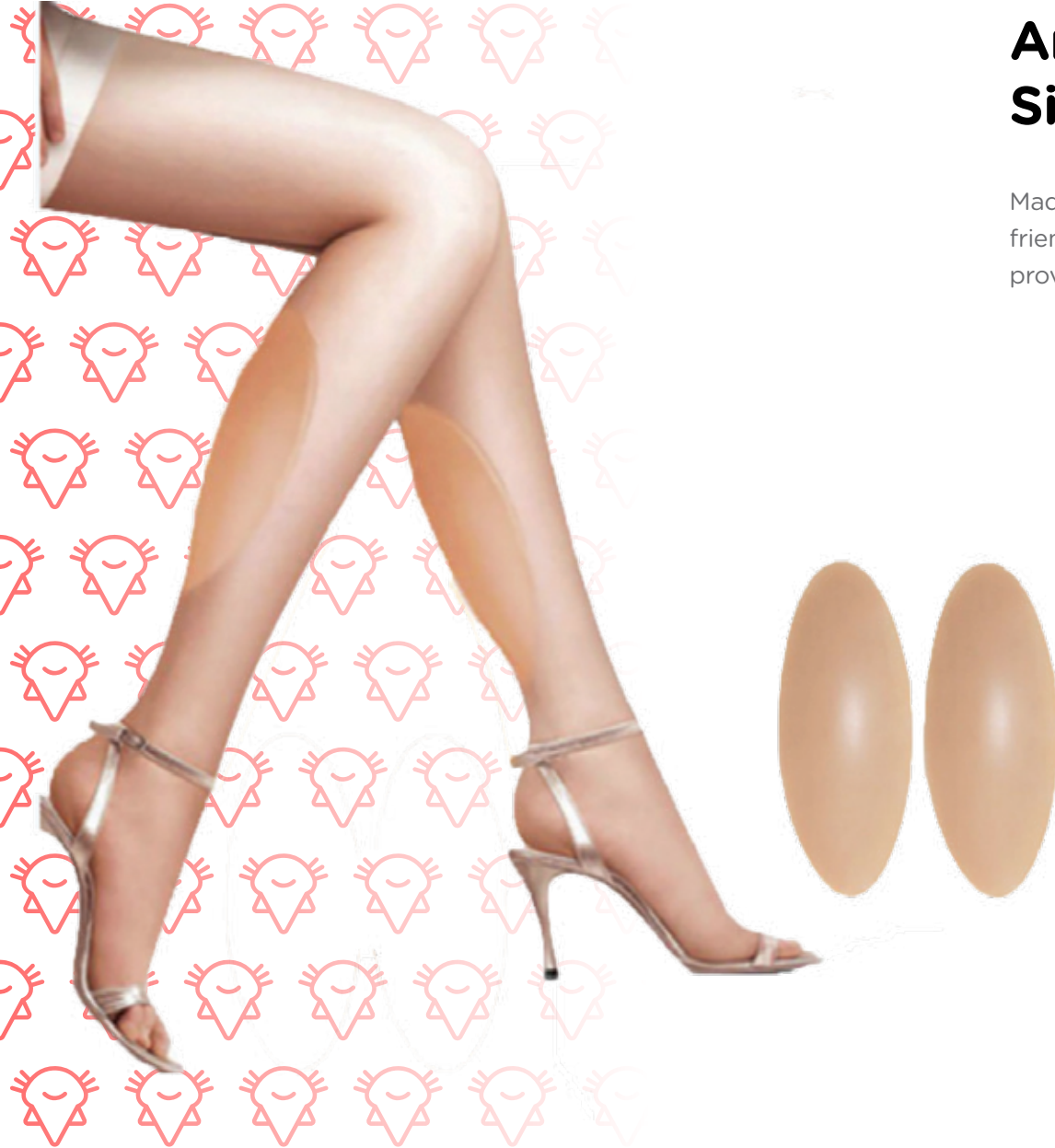
Made of 100% silicone materials. Strengthens wrists and fingers for sports purposes. Their hardness varies depending on the colors. You can exercise by squeezing the ball in your palm and releasing it. Hardness levels: Red = Hard, Blue: Medium, Green: Soft



AX-1355

## Anti Allergic Soft Silicone Calf Pads

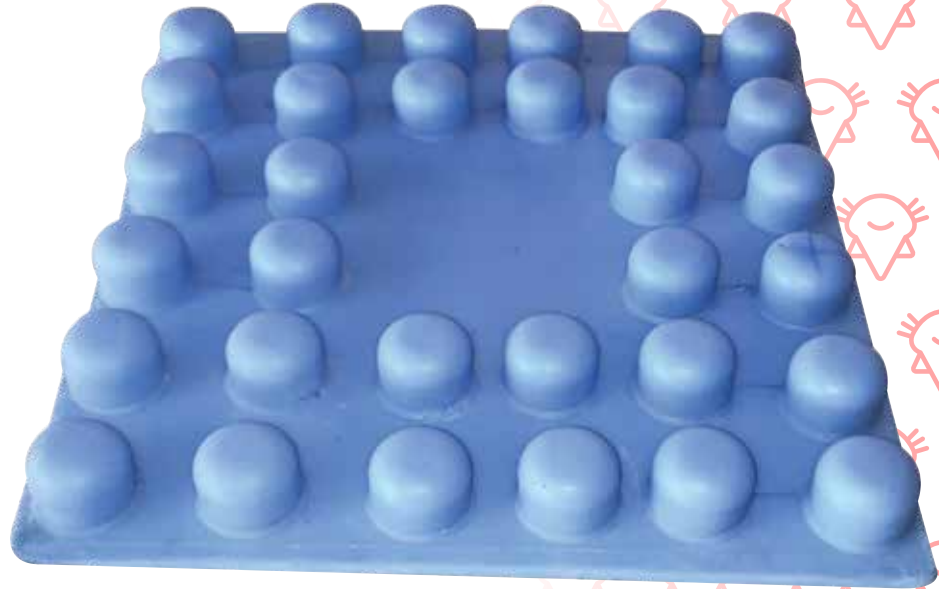
Made of soft, permanent, odorless, featureless, skin-friendly silicone. It visually hides your slimming and provides the perfect look on your legs.





AX-1356

# Anti-Decubitus Silicone Gel Cushion



AX-1357

# Silicone Wound Dressing Sheet

Produced in 3 different sizes. (10X10cm-15X15cm-15X30cm)



AX-1358

## Silicone Exercise Ball

Designed for hand therapy and relaxation exercises. In addition to finger exercises, it can be used for relaxation and stress control. Suitable for use by children and adults.





AX-1359

## Fabric Covered Silicone Tube Finger Protector

With its flexible knitted fabric coated structure, it helps relieve pain caused by calluses, nail problems, dry cuticles and abrasions. It can be easily cut to fit any desired size.



AX-1360

## Arch Support Cushions

Made of special silicone material that does not cause allergies and does not harm the skin. Reduces sole stress by supporting the arch area in cases of flat feet. Due to its adhesive feature, it remains stable in the shoe.



1 2

Size M L